



GUILDFORD
PHILHARMONIC

season 1999-2000



g

Welcome

Welcome to the 1999/2000 season of the Guildford Philharmonic. We hope that you will enjoy the wide range of exciting events on offer and take advantage of the excellent discount packages available. The season is a great opportunity to introduce children to live music-making: we've kept the children's tickets priced at £3, so it really is exceptional value for money.

Our Candlelight Concerts in Holy Trinity are proving increasingly popular (there are five this season) so book early to avoid disappointment! One of the highlights will be the world premiere of a new piece by John Tavener which he is writing for the Guildford Philharmonic's season to be sung by The Tallis Scholars in March.

Other highlights include the first classical concert in recent times in the marvellous setting of the Castle Grounds; the return of Ensemble

Bash for a day of children's concerts at the other end of the repertoire spectrum; concertos, symphonies and sacred music; Haydn's glorious oratorio *The Creation*; and John Rutter conducting a performance of his own *Requiem*.

Guildford Borough Council's most enlightened and imaginative support of the Philharmonic enables audiences throughout the region to enjoy a wide range of professional music-making of the highest quality. The Council is also grateful to South East Arts, South East Music Trust and to its corporate sponsors for financial assistance during the forthcoming season.

We look forward to welcoming you at our concerts.

Nicola Goold

Nicola Goold
General Manager



The Civic Concert

1

Friday 15 October 7.30pm

Guildford
Civic

Mendelssohn The Hebrides op.26
Elgar Cello Concerto
Beethoven Symphony No.3 in E flat major *Eroica*

Guildford Philharmonic Orchestra

Liwei Qin Cello
Paul Mann Conductor

The brilliant young British conductor Paul Mann returns to Guildford, after his marvellous debut with the Orchestra last season, for a programme including two of the greatest works in the orchestral repertoire. He has recently made his debuts with the St Petersburg Philharmonic, London Symphony Orchestra and Glyndebourne Festival Opera. He is joined for the Elgar by Liwei Qin, whose sensational recital was one of the highlights of the Guildhall's season.

Tickets: £14 (balcony), £11 (stalls), £3 (children, students & UB40s)

Concert sponsored by  **BOC GASES**

Box Office: 01483 444555

Baroque by Candlelight

2 Friday **29 October** 7.30pm

3 Saturday **30 October** 7.30pm

Holy Trinity Church
High Street, Guildford



- Purcell** Suite of Airs & Dances
from *The Fairy Queen*
- Bach** Violin Concerto in A minor
- Handel** Concerto Grosso op.6 No.1
- Albinoni** Oboe Concerto op.9 No.2
- A.Scarlatti** Cantata Pastorale
- Corelli** Concerto Grosso op.6 No.2

Guildford Philharmonic
Chamber Orchestra

Joanne Lunn Soprano
Victoria Walpole Oboe

Directed by **Andrew Watkinson**



Andrew Watkinson

Holy Trinity by Candlelight is the perfect setting for these two concerts which contain some of the most glorious gems of the Baroque era: and you can end your evening with a glass of wine in Guildford's historic Guildhall. This wealth of music ranges in scope and style from the English composer Henry Purcell's *Fairy Queen* music (based on Shakespeare's *A Midsummer Night's Dream*), via three of Italy's geniuses, to the masterpieces of J.S. Bach and Handel. Andrew Watkinson, leader of the City of London Sinfonia, and one of this country's most eminent violinists, directs the concert.

Tickets: £15 (including post-concert glass of wine at the Guildhall), £11 (concert only), £3 (children, students & UB40s - concert only)

NB Seating in the church may not be as comfortable as a concert hall, so do bring a cushion!

Friday's concert
sponsored by

solicitors

Hart Brown

Box Office: 01483 444555



Haydn's Creation

4 Saturday **20 November** 7.30pm

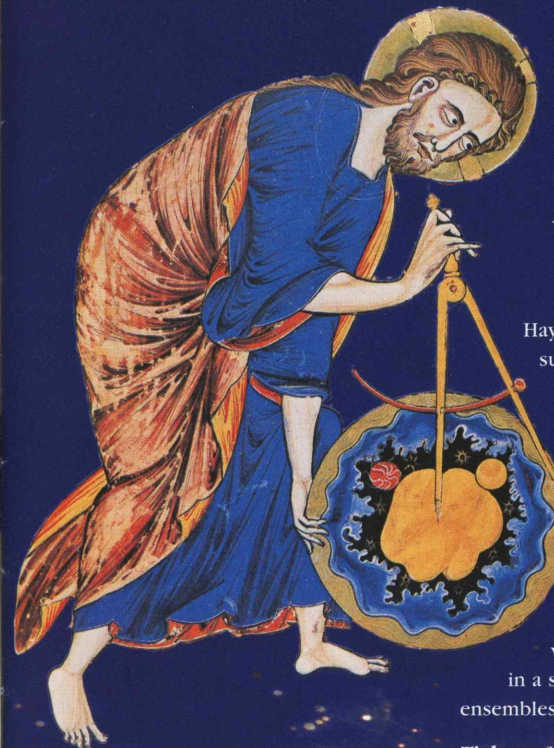
Guildford Civic



Guildford Philharmonic Choir
Guildford Philharmonic Orchestra

Joanna Cole Soprano
Matthew Beale Tenor
Andrew Foster Bass

En Shao Conductor



Haydn's magnificent oratorio *The Creation* is the summit of his artistic achievement. When Haydn came to England in the 1790s, he was greatly impressed by the oratorios of Handel, and it is these works which were the inspiration for Haydn's own masterpieces. *The Creation* is based on colourful and dramatic texts from the Book of Genesis and Milton's *Paradise Lost*, opening with the orchestral *Representation of Chaos* and surveying the whole of created life - light, the natural world, animals, and finally man and woman - in a series of remarkable solo movements, ensembles and choruses.

Tickets: £14 (balcony), £11 (stalls), £3 (children, students & UB40s)

Saturday **13 November** 10.00am-12.30pm

The Guildhall
High Street, Guildford

Haydn and The Creation: A fully illustrated talk by Terry Barfoot
Tickets: £5 (£3 to holders of tickets for concert 4): available from 01483 444666 only
Price includes coffee and cakes!

Box Office: 01483 444555

A Christmas Fanfare by Candlelight

Seasonal music for Brass & Voices
from Venice and beyond

5 Wednesday **15 December 8.00pm**

Holy Trinity Church
High Street, Guildford

Programme includes:

Gabrieli O magnum mysterium; Jubilate Deo;
Canzonas for Brass

Corelli Pastorale
from *The Christmas Concerto*

Monteverdi Introduction to *Orfeo*

Passereau Il est bel et bon

Pearsall In dulci jubilo

Franchos Trumpet Intrada

Ian White Renaissances

and a feast of carols for brass and
voices from the past three centuries

Guildford Camerata

Guildford Brass, directed by **Ian White**

Nicholas Cleobury Conductor

Music from the magical city of Venice, "La Serenissima", forms the first part of this Christmas concert, alongside other Renaissance jewels from across Europe. Giovanni Gabrieli was organist at St Mark's for twenty-eight years, and his glorious compositions remained at the centre of Venetian life for many years. Claudio Monteverdi became maestro di cappella in 1612 and his music, too, is at the pinnacle of the Italian Renaissance. The second part of the evening includes carols and Christmas music from more recent times, and you can end the evening in the unique setting of the Guildhall with mulled wine and mince-pies.

Tickets: £15 (including post-concert mulled wine & mince-pies at the Guildhall), £11 (concert only), £3 (children, students & UB40s - concert only)



Box Office: 01483 444555

Handel's Messiah

6 Saturday **18 December 7.30pm**

Guildford Cathedral

Guildford Cathedral Choir

Guildford Camerata

Guildford Philharmonic
Chamber Orchestra

Soloists include:

Lynda Russell Soprano
Gavin Rogers-Ball Alto

Stephen Farr Conductor



This year's performance of Handel's supreme oratorio is conducted by Guildford Cathedral's new Organist and Master of the Choristers. Stephen Farr was Assistant Master of Music at Winchester Cathedral, and before that held posts at Christ Church Cathedral, Oxford and Clare College, Cambridge. He is without doubt one of the most talented musicians of his generation.

Tickets: £12, £3 (children, students & UB40s)



Box Office: 01483 444555

The Magic of Vienna

7

Friday 28 January 7.30pm

Guildford Civic

Programme includes:

Weber Overture *Euryanthe*
 Haydn Trumpet Concerto
 Schubert *Rosamunde* Entr'acte No.3
 Johann Strauss *Roses from the South*
 Johann Strauss *Laughing Song*
 Johann Strauss *Emperor Waltz*
 Josef Strauss *Die Libelle*
 Josef Strauss *Moulinet* Polka

Guildford Philharmonic Orchestra

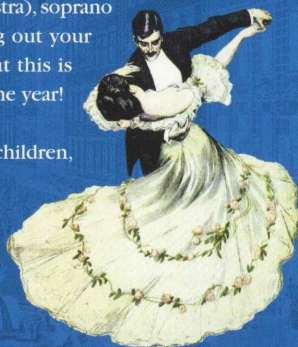
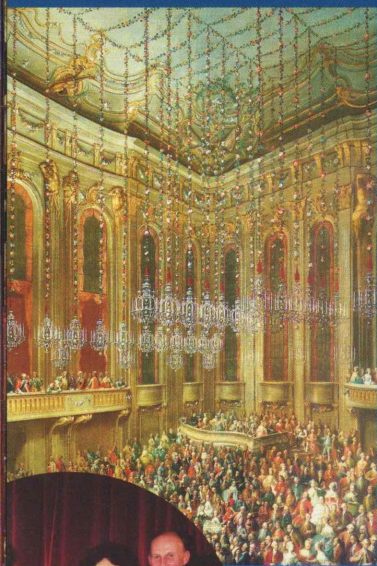
Ann Mackay Soprano
 Maurice Murphy Trumpet
 John Bradbury Conductor & Soloist

A sparkling evening of magical music from 18th and 19th century Vienna to begin the Guildford Philharmonic's new millennium in style. The concert includes well-loved waltzes, polkas and marches from old Vienna, as well as ravishing solos for trumpet (played by the Principal Trumpet of the London Symphony Orchestra), soprano and gypsy violin. You are invited to bring out your masks and ballroom finery to ensure that this is traditionally the best-dressed audience of the year!

Tickets: £14 (balcony), £11 (stalls), £3 (children, students & UB40s - concert only)

An interval glass of champagne is included with the £14 & £11 tickets

Box Office: 01483 444555



Mozart, Beethoven and Schubert by Candlelight

8

Friday 18 February 7.30pm

Holy Trinity Church
 High Street, Guildford

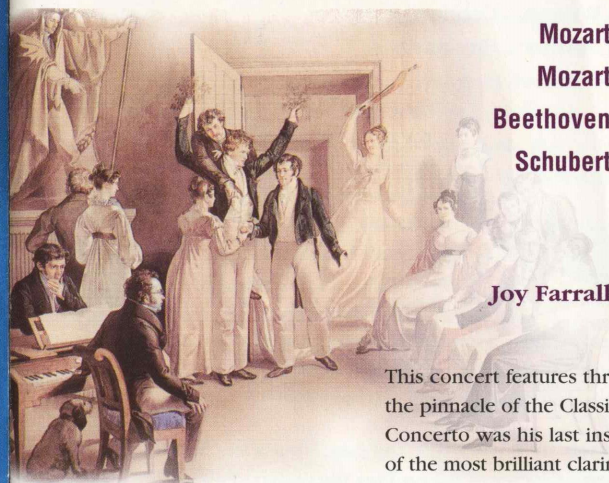
Mozart Symphony No.33 in B flat major
 Mozart Clarinet Concerto in A major
 Beethoven Romance No.2 in F major op.50
 Schubert Symphony No.5 in B flat major

Guildford Philharmonic Chamber Orchestra

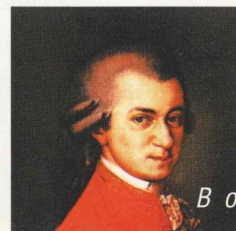
Joy Farrall Clarinet
 Directed by Martin Smith

This concert features three composers whose music is at the pinnacle of the Classical era. Mozart's glorious Clarinet Concerto was his last instrumental work, written for one of the most brilliant clarinetists of the time, Anton Stadler. The two symphonies, both in B flat major, form the book-ends of the programme: Schubert's 5th, written in 1816 when the composer was 19, the best and most popular of his early symphonies, and Mozart's beautiful 33rd, composed in 1779 in Salzburg. Beethoven's lyrical Romance, with Martin Smith as the soloist, completes the programme.

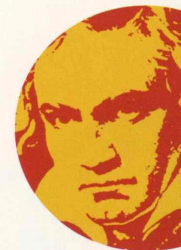
Tickets: £15 (including post-concert glass of wine at the Guildhall), £11 (concert only), £3 (children, students & UB40s - concert only)



Concert sponsored by

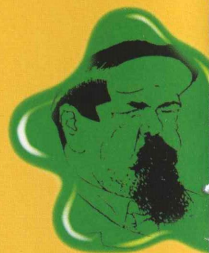


Box Office: 01483 444555



The Mad Hatter's Musical Tea Party

a special concert for half-term with Alasdair Malloy



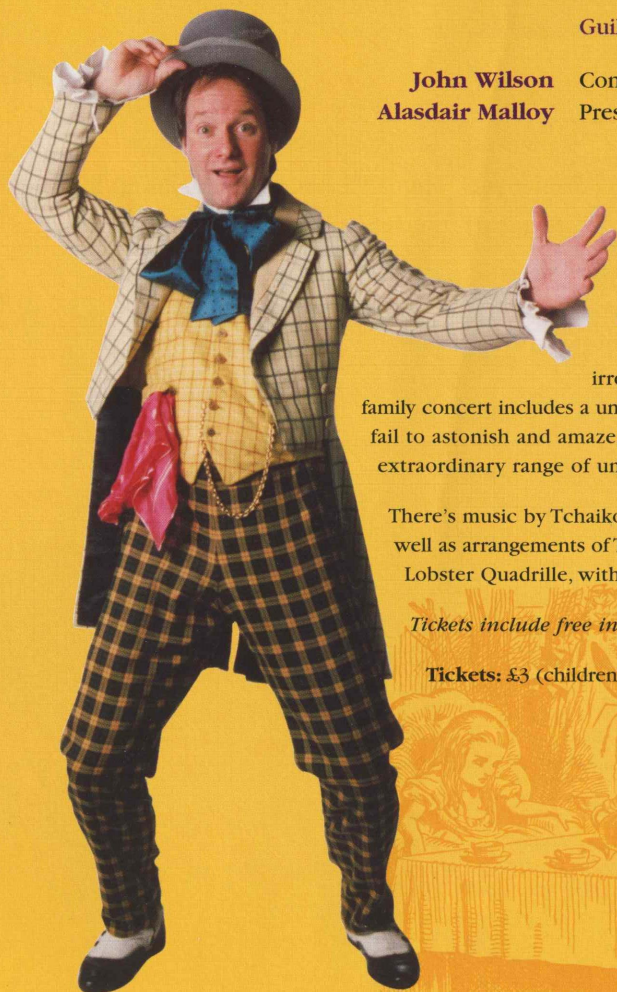
9

Friday 25 February 2.30pm

Guildford Civic

Guildford Philharmonic Orchestra

John Wilson Conductor
Alasdair Malloy Presenter



This concert is the perfect treat for the end of half-term week for the whole family. Alasdair Malloy is well-known for his appearances at the Proms, in particular the Blue Peter Children's Proms, and is a brilliant presenter, percussionist and irrepressible entertainer. This special

family concert includes a unique repertoire of pieces which never fail to astonish and amaze, and in which Alasdair plays an extraordinary range of unusual instruments.

There's music by Tchaikovsky, Debussy, Strauss and Mozart, as well as arrangements of Tea for Two, the Cuckoo Polka and the Lobster Quadrille, with lots of audience participation.

Tickets include free interval refreshments!

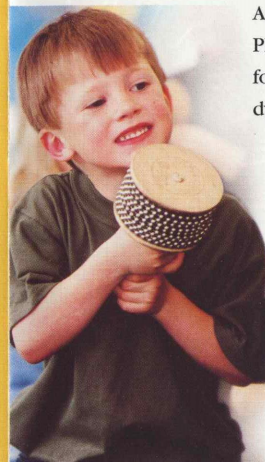
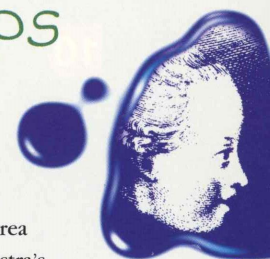
Tickets: £3 (children), £8 (adults)



Box Office: 01483 444555

Guildford Philharmonic Children's Workshops

6-10 March



As part of National Orchestra Week, musicians from the Guildford Philharmonic will be travelling round to different schools in the area for a series of workshops and informal concerts, led by the Orchestra's dynamic principal percussionist Chris Nall. Schools taking part so far include:

- Bishop Reindorp School**
- Queen Eleanor's School**
- The Redlands Junior School**
- Rodborough School**
- South Farnham Junior School**
- Weydon County Secondary School**



If you would like us to include your school on our travels, please contact Clare Lister on

01483 444733

These workshops are funded jointly by Guildford Borough Council and South East Music Trust.

Ensemble Bash

Thursday 25 May

Electric Theatre
Guildford

Back by popular demand, this amazing percussion group returns for a day of special World Tour concerts. This letter from a member of last year's audience speaks for itself.

All tickets £3: please contact the Philharmonic Office for details on 01483 444666



Queen Eleanor's C of E Junior school
Queen Eleanor's Road
Onslow Village
Guildford
Surrey
GU2 5SL

25th March 1999

Dear Ensemble Bash
I remember the piece in which you play a drum. You started playing softly and slowly then you hit the drum faster and faster but with the same strength as when you started. I could not believe how loud it was after a few seconds. I felt for a bit; afterwards deaf but I did enjoy it. That was the first instrument show I've been to. I think you did that act brilliantly. I could not believe my eyes when I saw all those instruments. It was absolutely super. I wish I could come again.

Your sincerely
Alexander



The Tallis Scholars From Taverner to Tavener

10

Friday 10 March 7.30pm

Holy Trinity Church
High Street, Guildford



WORLD PREMIERE

John Tavener **The Lord's Prayer**
(World Premiere: commissioned by Guildford Philharmonic)

John Tavener **The Lamb**

John Tavener **In the month of Athyr**

Taverner **Dum transisset sabbatum**

Tallis **Audivi vocem**

Sheppard **Gaude Virgo Christipera**

Peter Phillips Conductor

This country's leading composer, John Tavener, has composed a new piece, a setting of *The Lord's Prayer*, for The Tallis Scholars especially for this concert in the Guildford Philharmonic's season. The world-famous group returns to Guildford for a sublime programme of music from the 16th century English composer John Taverner and his contemporaries, as well as music by his distant 20th century descendant John Tavener.

Tickets: £20 (including post-concert glass of wine at the Guildhall), £17 (concert only), £3 (children, students & UB40s - concert only)

Concert sponsored by **BORAX**

Box Office: 01483 444555

Russian Romantics

11

Friday 17 March 7.30pm

Guildford Civic

Glinka **Overture *Ruslan and Ludmilla***
Tchaikovsky **Symphony No.5 in E minor**
Rachmaninov **Piano Concerto No.2 in C minor**

Guildford Philharmonic Orchestra

Jorge Luis Prats Piano
En Shao Conductor

Two brilliant international musicians combine in this concert of music by the great Russian masters. The extraordinarily gifted Cuban pianist, Jorge Luis Prats, returns to Guildford by popular demand and meets the mercurial talents of the Orchestra's Chinese Principal Conductor En Shao in Rachmaninov's most enduringly popular work; and the Symphony No.5 is quintessential Tchaikovsky in every bar, a work of heightened emotion and romantic yearning.

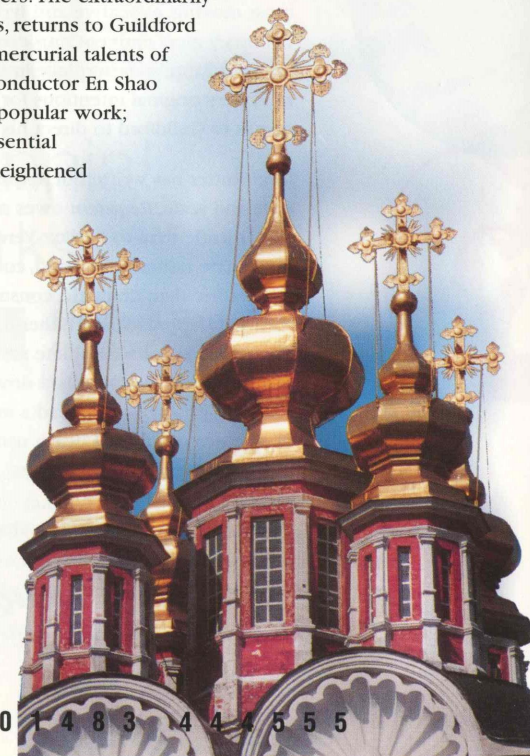
Tickets: £14 (balcony), £11 (stalls), £3 (children, students & UB40s)



En Shao



Jorge Luis Prats



Box Office: 01483 444555

Fauré and Rutter

12

Saturday 8 April 7.30pm

Guildford Cathedral

Fauré Requiem
Rutter Requiem

Guildford Camerata

Guildford Chamber Choir

Guildford Philharmonic Orchestra

Ruth Holton Soprano
Dr Barry Rose Conductor
John Rutter Conductor

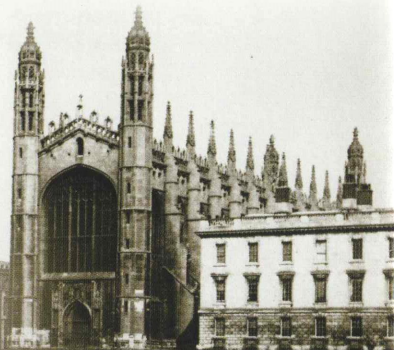
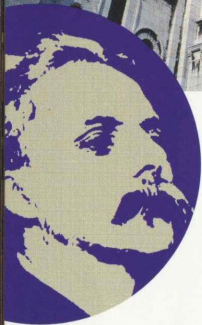
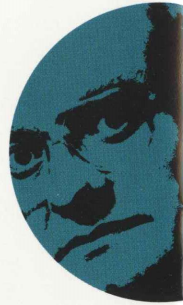
This concert of music for the eve of Passion Sunday combines two of the most moving, evocative and lyrical of Requiems, conducted by two of this country's most eminent musicians. Barry Rose returns to Guildford Cathedral to conduct Fauré's masterpiece in the orchestration by John Rutter which goes back to Fauré's original intentions for the work; and John Rutter comes to Guildford to direct his own composition.

John Rutter has written of *Requiem*: "In its style and scale, *Requiem* owes more to Fauré and Duruflé than to Berlioz, Verdi or Britten. It is intimate rather than grand, contemplative and lyric rather than dramatic, consolatory rather than grim, approachable rather than exclusive. The music is not a complete setting of the *Missa pro defunctis* as laid down in Catholic liturgy but instead a meditation on themes of life and death using a personal compilation of texts."

Tickets: £12, £3 (children, students, UB40s)

Concert sponsored by **BORAX**

Box Office: 01483 444555



A Midsummer's Entertainment

13

Saturday 24 June 8.30pm

Castle Grounds
Guildford

Guildford Philharmonic Orchestra

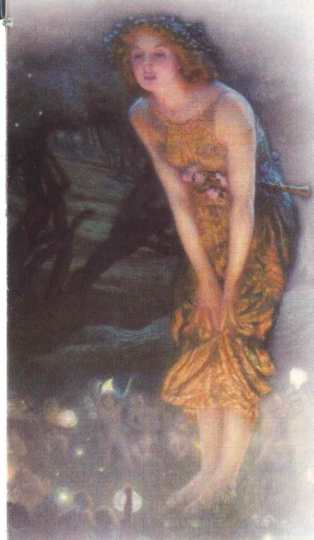
The Castle Grounds in Guildford are at their most beautiful in midsummer. This evening of entertainment, in the spirit of the Vauxhall Gardens concerts of the 18th century, provides a unique opportunity to wander around the spectacular flowers and borders and listen to music appropriate to a midsummer's evening (including Mendelssohn's *Midsummer Night's Dream* music, *Summer* from *The Four Seasons* of Vivaldi, *Country Gardens* by Percy Grainger, *Eine kleine Nachtmusik* by Mozart, and *Summertime* by Gershwin).

You can enjoy a glass of Pimms, watch a traditional game of bowls, and finally view the scenery in a completely different light as the Castle is floodlit and the flowers and trees are lit up.

Tickets: £10, £3 (children, students & UB40s)

Concert sponsored by

 The Guildford
Nuffield Hospital



Rule, Britannia! with Fireworks

14

Saturday 8 July 8.00pm

Shalford Park
Guildford

Guildford Philharmonic Orchestra

This annual concert is one of the highlights of the summer in Guildford and is a marvellous evening out for the whole family. Enjoy your picnic in the beautiful setting of Shalford Park to the sounds of the Guildford Philharmonic Orchestra performing favourites from the classical repertoire, with a spectacular firework finale. There are prizes for the best-dressed picnic table/rug and diners!

Tickets: £13 (adults), £3 (children, students & UB40s)



Box Office: 01483 444555

Booking Information

There are 14 concerts in the 1999/2000 season of the Guildford Philharmonic and these are numbered from 1 - 14 on this brochure. We are again running a flexible subscription scheme, which allows you to pick and choose the concerts you wish to attend.

The following discounts will apply to multiples of tickets booked:

	1 to 3 concerts - no discount
Bronze Subscription:	4 to 5 concerts - 10% discount
Silver Subscription:	6 to 8 concerts - 15% discount
Gold Subscription:	9 to 11 concerts - 20% discount
Diamond Subscription:	12 to 14 concerts - 25% discount
Party Bookings:	20% discount on 10 or more tickets

NB Only one discount applies per transaction

Special benefits: Gold and Diamond Subscribers are invited to a Reception after the concert on Saturday 20 November

Booking opens Monday 23 August.
Applications will not be dealt with before this date.

How to book

Guildford Civic Box Office: 01483 444555

Monday - Friday 9.30am - 6.00pm

Saturday 9.30am - 4.30pm

45 minutes before each concert at the appropriate venue

- Fill in the booking form with your appropriate choices of concert, price, number of tickets, etc.

If you wish, you can leave the TOTAL box empty for the Box Office to make the appropriate deduction if you are booking for more than three concerts

- Choose your method of payment:

Cheque payable to **Guildford Borough Council**

Credit card (Visa/M'card) - by booking form or phone (01483 444555)

3 post-dated cheques for the 1 October 1999, 1 December 1999, 1 February 2000 made payable to **Guildford Borough Council**

- Enclose a **stamped addressed envelope** and post this form with your payment to: Box Office, Guildford Civic, Guildford, Surrey, GU1 2HA

Seat Prices

Special ticket offer: children under 18, students, UB40s: all seats £3 [for numbered concerts] **Special OAP stand-by:** any lower priced seat for £8 at the door subject to availability

NB subscription discounts and party discounts do not apply to children's, students' and UB40s' tickets

BOX OFFICE: 01483 444555

Booking Form

Priority booking code (subscribers of 98-99 only)

concert number	full price tickets (subject to discount)	No. required	child/stu/UB40 (No. required)	concert number	full price tickets (subject to discount)	No. required	child/stu/UB40 (No. required)
1	Balcony (£14)	<input type="text"/>	no further discount applicable	8	With a post concert glass of wine (£15)	<input type="text"/>	no further discount applicable
	Stalls (£11)	<input type="text"/>			Concert only (£11)	<input type="text"/>	
2	With a post concert glass of wine (£15)	<input type="text"/>		9	£8 (adults)	<input type="text"/>	
	Concert only (£11)	<input type="text"/>					
3	With a post concert glass of wine (£15)	<input type="text"/>		10	With a post concert glass of wine (£20)	<input type="text"/>	
	Concert only (£11)	<input type="text"/>			Concert only (£17)	<input type="text"/>	
4	Balcony (£14)	<input type="text"/>		11	Balcony (£14)	<input type="text"/>	
	Stalls (£11)	<input type="text"/>			Stalls (£11)	<input type="text"/>	
5	With post concert wine & mince-pies (£15)	<input type="text"/>		12	Nave/west gallery (£12)*	<input type="text"/>	
	Concert only (£11)	<input type="text"/>					
6	Nave/west gallery (£12)*	<input type="text"/>		13	£10	<input type="text"/>	
		<input type="text"/>					
7	Balcony (£14)	<input type="text"/>		14	£13	<input type="text"/>	
	Stalls (£11)	<input type="text"/>					

*Please delete as appropriate to indicate your choice.

No. of full price seats

total price for full price seats
(as listed above, before discount) £

discount deductible
(see opposite page for details) £

SUB TOTAL £

No. of children/
student & UB40 seats

(No further discount for these seats) £

preferred Guildford Civic seat numbers if known
(cannot be guaranteed) Stalls/balcony

GRAND TOTAL £

g
o



SUPPORTED BY
THE NATIONAL LOTTERY
THROUGH
THE ARTS COUNCIL
OF ENGLAND



e-mail: guildfordphil@guildford.gov.uk website: www.guildfordphilharmonic.co.uk

Design and artwork by Creative Communications, Surrey 01483 267915 Printed by Em-En-Ess Printers Ltd 0181 5256500