



THE ROTARY CLUB OF GUILDFORD

presents

THE MAYOR OF GUILDFORD'S

CAROL CONCERT

**in aid of the Mayor of Guildford's Christmas
and Local Distress Fund**

CIVIC HALL, GUILDFORD

SUNDAY, DECEMBER 19th 1999

THE GUILDFORD PHILHARMONIC CHOIR

conducted by Jeremy Backhouse

THE GUILDFORD SYMPHONY ORCHESTRA

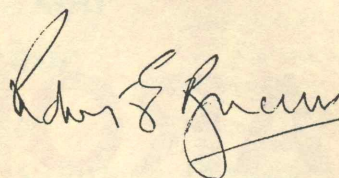
conducted by Darrell Davison

A MESSAGE FROM THE MAYOR OF GUILDFORD

I note with gratitude that the Rotary Club of Guildford has again adopted the Mayor's Distress Fund as the charity they wish to support during their Carol Concert.

The Mayor's Distress Fund has been set up to make small donations to many of Guildford's needy people. We support them in acquiring school uniforms and other items which most of us take for granted, but which make a substantial difference for other people.

The Mayoress and I join in wishing you a happy christmas and a prosperous Millennium.



Councillor Dr. Robert Blundell
Mayor of Guildford



PROGRAMME

Please stand for the singing of the Audience Carols

Audience Carol:	Once in Royal David's City	H.J. Gauntlett, arr. David Willcocks
Choir/Orchestra:	Fantasia on Christmas Carols	Vaughan Williams
Audience Carol:	O little town of Bethlehem (Verse 3 Choir only)	
Orchestra:	Christmas Eve Polonaise Polovtsian Dances	Rimsky-Korsakov Borodin
Audience Carol:	O Come all Ye Faithful	

INTERVAL (Refreshments available)

Audience Carol:	Unto us is born a Son	(Verse 2 Choir only) (Verse 3 Men only) (Verse 4 Women only)
Choir/Orchestra:	Personent hodie (arr. Holst)	
Orchestra:	Prelude to Act II of "Lohengrin" Waltz from "Sleeping Beauty" Trisch-Trasch Pokia	Wagner Tchaikovsky Johann Strauss
Audience Carol:	See amid the winter's snow	(Verse 3 Women only) (Verse 4 Men only)
Choir:	Deck the hall I saw a maiden	(arr. Willcocks) (arr. Pettman)
Choir/Orchestra:	The Twelve Days of Christmas	(arr. Rutter)

THE ARRIVAL OF FATHER CHRISTMAS

to the accompaniment of the
Christmas Festival Overture (Leroy Anderson)

Audience/Choir/Children:	Away In a Manager	(Verse 1 sung by the Children only); (Verse 2 sung by the Children and Choir only); (Verse 3 sung by everyone).
---------------------------------	-------------------	---

DISTRIBUTION OF PRESENTS TO CHILDREN

while the Orchestra plays the Christmas
Festival Overture (Part Two) (Leroy Anderson)

Audience Carol:	Hark! The Herald angels Sing	
Encore:	We Wish You a Merry Christmas	

Pollard

Established 1896

107, Stoke Road
Guildford

Plumbing, Heating &
Ventilation Engineers

Telephone:
Guildford 572005

Surrey Advertiser

are pleased to
be supporting
The Mayor's
Christmas Carol
Concert



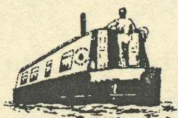
Merry Christmas and Happy New Year



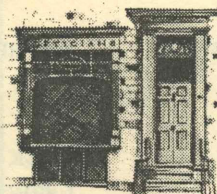
GUILDFORD BOAT HOUSE

WISHES EVERYONE
A
VERY MERRY CHRISTMAS

RIVER TRIPS — ROWING BOATS
PARTY CRUISES ON BOARD THE ALFRED LEROY
SELF DRIVE HOLIDAY NARROW BOATS
APARTMENTS IN NERJA COSTA DEL SOL



MILLBROOK,
GUILDFORD,
SURREY GU1 3XJ
TEL: 01483 504494
FAX: 01483 506318
[HTTP://WWW.CANALIA.COM/GUILDFORD_BOATS](http://www.canalia.com/guildford_boats)



NICKLINS
ESTABLISHED 1928

216 High Street
Guildford

Specialising lenses &
contact lenses-

For an appointment
just call us.

Guildford
(01483) 561256

A U D I E N C E C A R O L S

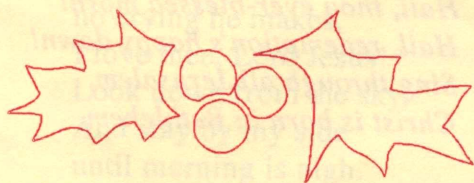
Once in Royal David's City

Solo Once in royal David's city
Stood a lowly cattle shed,
Where a mother laid her baby
In a manger for his bed:
Mary was that mother mild,
Jesus Christ her little child.

Choir only He came down to earth from heaven
Who is God and Lord of all,
And his shelter was a stable,
And his cradle was a stall;
With the poor, and mean, and lowly,
Lived on earth our Saviour holy.

All And through all this wondrous child-
hood
He would honour and obey,
Love, and watch the holy maiden,
In whose gentle arms he lay;
Christian children all must be
Mild, obedient, good as he.

Not in that poor lowly stable,
With the oxen standing by,
We shall see Him; but in heaven,
Set at God's right hand on high;
When like stars his children crowned
All in white shall wait around.



O Little Town of Bethlehem

O little town of Bethlehem,
How still we see thee lie!
Above thy deep and dreamless sleep
The silent stars go by.
Yet in thy dark streets shineth
The everlasting light;
The hopes and fears of all the years
Are met in thee tonight.

O morning stars, together
Proclaim the holy birth,
And praises sing to God the King,
And peace to men on earth;
For Christ is born of Mary;
And, gathered all above,
While mortal sleep, the angels keep
Their watch of wondering love.

How silently, how silently,
The wondrous gift is given!
So God imparts to human hearts
The blessings of his heaven.
No ear may hear his coming;
But in this world of sin,
Where meek souls will receive him, still
The dear Christ enters in.

O holy Child of Bethlehem,
Descend to us, we pray;
Cast out our sin, and enter in,
Be born in us today.
We hear the Christmas angels
The great glad tidings tell:
O come to us, abide with us,
Our Lord Emmanuel.



A U D I E N C E C A R O L S

O Come, All Ye Faithful

O come, all ye faithful,
Joyful and triumphant.
O come ye, O come ye to Bethlehem;
Come and behold him,
Born the King of Angels:

O come, let us adore him,

O come, let us adore him,

O come, let us adore him,

Christ the Lord.

God of God,
Light of Light,
Lo! he abhors not the Virgin's womb.
Very God,
Begotten, not created:

O come, let us adore him,

O come, let us adore him,

O come, let us adore him,

Christ the Lord.

Sing, choirs of angels,
Sing in exultation,
Sing, all ye citizens of heaven above;
Glory to God
In the highest:

O come, let us adore him,

O come, let us adore him,

O come, let us adore him,

Christ the Lord.

Yea, Lord, we greet thee,
Born this happy morning,
Jesu, to thee be glory given;
Word of the Father,
Now in flesh appearing;

O come, let us adore him,

O come, let us adore him,

O come, let us adore him,

Christ the Lord.

Unto us is born a Son

Unto us is born a Son,
King of quires supernal:
See on earth his life begun,
Of lords the Lord eternal,
of lords the Lord eternal.

Christ, from heav'n descending low,
Comes on earth a stranger;
Ox and ass their owner know,
Becradled in the manger,
becradled in the manger.

This did Herod sore affray,
And grievously bewilder,
So he gave the word to slay,
And slew the little childer,
and slew the little childer

Of his love and mercy mild
This the Christmas story;
And O that Mary's gentle Child
Might lead us up to glory,
might lead us up to glory!

O and A, and A and O,

Cum can-ti-bus in cho-ro

Let our merry organ go,

Be-ne-di-ca-mus Do-mi-no,

be-ne-di-ca-mus Do-mi-no.

See amid the winter's snow

See amid the winter's snow,
Born for us on earth below;
See the tender Lamb appears,
Promised from eternal years:

Hail, thou ever-blessed morn!

Hail, redemption's happy dawn!

Sing through all Jerusalem,

Christ is born in Bethlehem.

A U D I E N C E C A R O L S

Lo, within a manger lies
He who built the starry skies;
He who, throned in height sublime,
Sits amid the cherubim:

*Hail, thou ever-blessed morn!
Hail, redemption's happy dawn!
Sing through all Jerusalem,
Christ is born in Bethlehem.*

Sacred infant, all divine,
What a tender love was thine,
Thus to come from highest bliss
Down to such a world as this!

*Hail, thou ever-blessed morn!
Hail, redemption's happy dawn!
Sing through all Jerusalem,
Christ is born in Bethlehem.*

Teach, O teach us, Holy Child,
By thy face so meek and mild,
Teach us to resemble thee,
In thy sweet humility:

*Hail, thou ever-blessed morn!
Hail, redemption's happy dawn!
Sing through all Jerusalem,
Christ is born in Bethlehem.*

Away in a Manger

Away in a manger,
no crib for a bed,
The little Lord Jesus
laid down his sweet head;
The stars in the bright sky
looked down where he lay,
The little Lord Jesus
asleep on the hay.

The cattle are lowing,
the baby awakes,
But little Lord Jesus
no crying he makes.
I love thee, Lord Jesus!
Look down from the sky,
And stay by my side
until morning is nigh.

Be near me, Lord Jesus;
I ask thee to stay
Close by me for ever,
and love me I pray.
Bless all the dear children
in thy tender care,
And fit us for heaven,
to live with thee there.

Hark! The Herald-Angels Sing

Hark! the herald-angels sing
Glory to the new-born King;
Peace on earth and mercy mild,
God and sinners reconciled:
Joyful all ye nations rise,
Join the triumph of the skies,
With the angelic host proclaim,
Christ is born in Bethlehem.

*Hark! the herald-angels sing
Glory to the new-born King.*

Christ, by highest heaven adored,
Christ, the everlasting Lord,
Late in time behold him come
Offspring of a virgin's womb:
Veiled in flesh the Godhead see,
Hail the incarnate Deity!
Pleased as man with man to dwell,
Jesus, our Emmanuel.

*Hark! the herald-angels sing
Glory to the new-born King.*

Hail the heaven-born Prince of Peace!
Hail the Sun of Righteousness!
Light and life to all he brings,
Risen with healing in his wings;
Mild he lays his glory by,
Born that man no more may die,
Born to raise the sons of earth,
Born to give them second birth,

*Hark! the herald-angels sing
Glory to the new-born King.*

THE ROTARY CLUB OF GUILDFORD

The Rotary Club of Guildford was formed in 1921 and was the fiftieth club to become established in Great Britain and Ireland. By the early 1920s, the rapidly growing Rotarian movement boasted 100 clubs in the United States but only 6 in the United Kingdom. Today, there are 1500 clubs nationwide with one million members and 20,000 Rotary Clubs worldwide. Besides the original Guildford Club, there are two other Rotary Clubs in the Borough - The Guildford District and Guildford Chancies Clubs.

Guildford Rotary Club has carried out many fund-raising projects over the years and one of its first was the 'Big Brother Scheme', which was launched to help youngsters who had lost their fathers during the First World War. From this, a local Juvenile Employment Committee was formed in the 1930s, with a local Rotarian as Chairman. In 1927, another fund-raising scheme was organised by the club and successfully raised enough money to place wireless sets in local hospitals.

Most memorable of all the wartime activities was that dealing with the reception of the Dunkirk survivors as they arrived home at Guildford Station in the summer of 1940. For five days, troop trains carrying 200,000 men stopped at the station and helpers from Rotary, WVS, Round Table and the Salvation Army were on the platforms to meet the wants of the war-weary men.

Significant contributions have also been made to the Yvonne Arnaud Theatre and the University of Surrey. The first Vice-Chancellor Dr. D.M. Leggett said in an address that "But for the action of Guildford Rotary Club, the University would never have materialised".

Senior Citizens parties and outings, charity dances, disabled shopping evenings and the Mayor of Guildford's Carol Concert are just a few of the many local projects still undertaken the Guildford Rotary Club. At the present time, the club is raising money with the Rotary Club of Calcutta to supply vital sight-saving eye equipment for use in Calcutta Hospital and the latest local charity to benefit from Guildford Rotary's support will be the Guildford Prostate Cancer Appeal in the year 2000.

THE GUILDFORD PHILHARMONIC CHOIR

The Guildford Philharmonic Choir was founded in 1947 by the Borough of Guildford to perform major works from the choral repertoire with the Guildford Philharmonic Orchestra. The Choir is now independent from the Borough of Guildford but still maintains close links with the Guildford Philharmonic Orchestra.

The Choir grew to prominence under the batons of such eminent British musicians as Sir Charles Groves, Vernon Handley and Sir David Willcocks. Sir David remains in close contact with the Choir as its current President and Jeremy Backhouse has been the Chorus Director since 1995.

Notable achievements in recent years include Handel's *Israel in Egypt* with the Freiburger Bachchor in Freiburg in May 1998 and a rousing performance of Elgar's *Dream of Gerontius* at the Guildford Civic Hall in March 1998. Last season's highlights included Philip Moore's *De Profundis* and Poulenc's *Gloria* in collaboration with the University of Surrey's Choir and Orchestra. Last December, the Choir collaborated with the Guildford Symphony Orchestra, when it performed with them at the Mayor of Guildford's Christmas Carol Concert for the first time. In March 1999, the Choir gave widely acclaimed performances of Mahler's Second Symphony *Resurrection* and Bruckner's *Mass in E Minor*.

The Choir has a challenging and exciting concert programme planned for the 1999/2000 season. On March 11th. 2000, the Choir will be hosting a Gala Concert to celebrate the Millennium and the twenty-first anniversary of the town-twinning between Guildford and Freiburg with a performance of Bach's *St. Matthew Passion* in Guildford Cathedral with the Freiburger Bachchor and the Brandenburg Sinfonia. On June 10th, the Choir will be performing Walton's *Belshazzar's Feast* at the Guildford Civic Hall. There will also be another concert in collaboration with the University of Surrey's Choir and Orchestra at Guildford Cathedral on February 12th. 2000, when the programme will include *A Prayer* by Frank Bridge.

The Choir is always searching for new members to maintain its high standard and auditions are held throughout the year. Further details about joining the Choir and information about future concerts can be obtained from Noreen Ayton on (01932) 221918.

THE GUILDFORD SYMPHONY ORCHESTRA

Founded in 1919 by Claud Powell, the Guildford Symphony Orchestra established itself throughout the inter-war years as an amateur orchestra of distinction. Famous composers came to conduct - notably Elgar with his violin concerto, Vaughan Williams with his fifth symphony and Roger Quilter with his *Children's Overture*. Other guest conductors have included Adrian Boult, Arthur Bliss and Charles Groves. After Claud Powell's death in 1959, Ralph Nicholson took over with his inimitable combination of warm-hearted humour and fine musicianship. In 1990, the baton passed to Darrell Davison, under whose expert and dynamic direction new heights have been scaled.

The last decade has been a period of particularly impressive development. The Orchestra has grown in numbers and reputation; both the standard of playing and the difficulty of the works played have risen and the GSO is now the only Guildford orchestra regularly offering a full-scale programme of 19th and 20th century symphonic music. The musical development of young people has long been a priority with the GSO : its recent 'Tidings of Joy' concert at the Cathedral saw a large children's choir performing Christmas songs they had composed and on February 13th 2000, five young instrumentalists of exciting promise will be playing concerto movements in the annual Young Artists concert.

The GSO sees itself very much as a community orchestra : in addition to its co-operation with local charities, close links have been forged with the Borough of Guildford, the results of which can be seen in the newly-introduced series of Family Concerts promoted by Guildford Borough Council.

There are several ways in which you can support the GSO. If you would like further information, please contact Robin Chase - the Chairman of the Friends of the GSO - on (01483) 575452.

Phoenix Pharmacy

268 High Street
Guildford

☎ 01483 560355

"We Care"

- Collection & Delivery of Prescriptions
- Friendly Professional advice on Medication
- Extensive range of Health Supplements
- Aids to enable the Disabled
- Attractive Fine Fragrance Department

"Ask Your Pharmacist"

The Guildford Family Concerts

Conducted by Darrell Davison

THE SNOWMAN

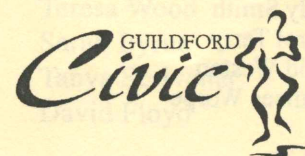
Sat 22 Jan 2000 at 11am

The Guildford Symphony Orchestra

A concert of changing seasons and elements from Vivaldi's *Winter* to Delius' *Summer Evening* and from Glazunov's *Autumn* to Schumann's *Spring Symphony*. The elements are represented by Beethoven's *Storm* - from the *Thunder and Lightning Polka* by Strauss. However the highlight of the programme is the story of *The Snowman* which will be narrated by **Aled Jones**.

Book your seats now to avoid disappointment. Tickets only £5.

Aled Jones



BOX OFFICE 01483 444555

Guildford Civic, London Road, Guildford, GU1 2AA

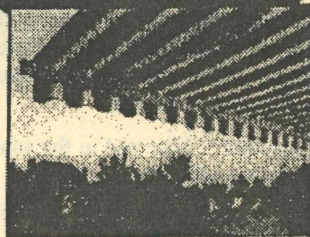
Guildford Shades



BLINDS & AWNINGS
Established 1929
Manufacturers and Installers

AWNINGS
ROLLERS
VERTICALS
VENETIAN
PLEATED

SECURITY SHUTTERS



LARGE COMPREHENSIVE SHOWROOM

No obligation home visits with free estimates

Full renovation service also available

Tel: 01483 232394 Fax: 01483 236420

Keens Lane • Worplesdon • Guildford • Surrey

AccountancyAppointments

FINANCIAL RECRUITMENT

- ❖ Permanent & temporary assignments
- ❖ All accounting seniorities & functions
- ❖ Commerce, Industry and Practice
- ❖ Advice on Salaries, training etc.
- ❖ Friendly and unbiased advice
- ❖ Confidential and Professional Service

Hadleigh House
232 High Street
Guildford
Surrey GU1 3JF

Tel: 01483 306336 Fax: 01483 300242

E-mail: Ma@accapp.com

GUILDFORD PHILHARMONIC CHOIR

1st Sopranos

Olivia Ames-Lewis
Joanna Andrews
Noreen Ayton
Sally Bayton
Elizabeth-Claire Bazin
Elizabeth Blake
Mary Broughton
Elaine Chapman
Maura Dearden
Rachel Edmondson
Melanie Hezzell
Mo Kfour
Susan Norton
Robin Onslow
Margaret Parry
Kate Rayner
Judy Smith
Carol Terry
Enid Weston
Frances Worpe

2nd Sopranos

Jacqueline Alderton
Penny Baxter
Josephine Field
Angela Hand
Susan Hinton
Nora Kennea
Judith Lewy
Gayle Mayson
Alison Palmer
Susan Ranft
Alison Rawlinson
Gillian Rix
Maureen Shortland
Caroline Starck
Vicki Steele
Kathy Stickland
Tessa Wilkinson
Christine Wilks
Lucinda Wilson

1st Alto

Marion Arbuckle
Mary Anne Barber
Jane Brooks
Amanda Clayton
Margaret Dentskevich
Valerie Edwards
Mandy Freeman
Ingrid Hardiman
Jo Harman
Susan Hinton
Joy Hunter
Isabel Hyde
Carol Jones
Helen Lavin
Valerie Leggatt
Kay McManus
Christine Medlow
Rosalind Milton
Kate Plackett
Lesley Scordellis
Catherine Shacklady
Hilary Trigg
Pamela Woodroffe

2nd Alto

Sally Bailey
Iris Ball
Evelyn Beastall
Iris Bennett
Andrea Dombrowe
Carol Hobbs
Sheila Hodson
Krystyna Marsden
Lisa McCully
Mary Moon
Brenda Moore
Jean Munro
Sue O'Connell
Anne Philips
Gillian Sharpe
Prue Smith
Hilary Steynor
Rosie Storey
June Windle
Maralyn Wong

1st Bass

Peter Allen
Neil Clayton
Philip Davies
Simon Doran
Michael Dudley
Terence Ellis
Geoffrey Forster
Laurie James
Tony Macklow-Smith
Chris Newbery
Roger Penny
David Ross
Philip Stanford

2nd Bass

Roger Barrett
Alan Batterbury
John Britten
Norman Carpenter
Nick Gough
Michael Jeffery
Stephen Jepson
Maxwell New
Barry Norman

1st Tenor

Bob Cowell
Andrew Reid
John Trigg
Maggie van Koetsveld

2nd Tenor

Bob Bromham
Douglas Cook
Tony Cousins
Leslie Harfield
Chris Robinson

JEREMY BACKHOUSE

Jeremy began his musical career at Canterbury Cathedral, where he was Head Chorister and later studied music at Liverpool University. He spent five years as Music Editor at the Royal National Institute for the Blind, where he was responsible for the transcription of printed music into Braille. In 1986, he joined EMI Records as a Literary Editor and since 1990 has combined his work as the EMI Classics Consultant Editor with his career as a freelance conductor and record producer.

In 1995, Jeremy was appointed Chorus Master of the Guildford Philharmonic Choir and in the same year was invited to conduct the BBC Singers for the first time, subsequently conducting them for several broadcast performances.

His recent work has included directing the Kent Youth Choir and the Kent Chamber Choir in 1996, and working with the Brighton Festival Chorus as an assistant conductor. In September 1998, Jeremy became the Musical Director of the Woburn Singers, becoming only the third conductor to work with this particular choir in its distinguished thirty year history.

DARRELL DAVISON

Darrell Davison was a music scholar at Charterhouse and later studied music at Cambridge, where he not only conducted several orchestras but started a new one! After winning the Sir John Barbirolli conducting competition in 1979, he was invited to conduct the London Philharmonic and London Symphony Orchestras and was commissioned to compose new works for both of them. He has also worked with the Ulster Orchestra as their principle cellist.

In 1992, Darrell was appointed as Musical Director of the Croydon Symphony Orchestra and the Arthur Davison Family Concerts at the Fairfield Halls, with which his father had been associated for many years.

He has been Musical Director of the Guildford Symphony Orchestra since 1990 and also conducts for the Epsom Symphony Orchestra, the Haslemere Music Society and the Cambridge Orchestra.

THE ORCHESTRA

1st. VIOLINS

Rosemary Roberts (*Leader*)
Leon Crampin
Ian Dow
Elizabeth Garrett
Angharad Lewis Jones
Alison Marshall
Liga Millers
Beverley Morris
Chris Phelps
Liz Porcher
Hazel Tripp
Sarah von Schweinitz
Rosemary Wisdom
Christine Woodward

OBOES

Helen Hollowood
Elizabeth Driscoll

TIMPANI

Chris Kimber

TUBA

Duncan Penkey

2nd. VIOLINS

Jane Bradbeer
Astrid Clarius
Bev Fox
Jennifer Hills
Phebe Kynaston
Karen Prince
Caroline Taylor
Anne Trant
Ian Wrenn

FLUTES

Denise Janaway
Steve Pitchforth

PICCOLO

Sandra Hyde

TRUMPETS

Wendy Pawsey
Tim Gregory
Catherine Mowatt

BASSOONS

Andrew Norrs
Lesley Griffiths

VIOLAS

Linda Dyson
Sophie Hardcastle
Mary Howard
Wendy Innes
Alison Leather
Kathy Moore
Josie Pitchforth
Alan Thorpe

DOUBLE BASSES

Jenny Abbott
John Daniel
Peter Hardcastle
Chris Kerse

HORNS

Angie Carr
Peter Harris
Kate Kiff
Katherine Long
Andy Thompson

TROMBONES

Richard Pyewell
Michael Straker
Richard Stubbinger

CELLOS

Elizabeth Elston
Andrew Fardoe
Kate Feaviour
Linda Forsyth
Rebecca Griffin
Sharon Hesford
Gabrielle Kingaby
Wendy Morris
Wendy Ratcliffe
Paul Starbuck
Daniel Watkins

CLARINETS

Teresa Wood
Sarah Byrne
Tanya Scrivener
David Floyd

PERCUSSION

Donna Landowski
Robert Ball

COR ANGLAIS

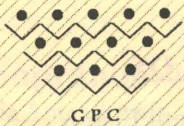
Elizabeth Davison

ACKNOWLEDGEMENTS

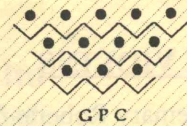
The Rotary Club of Guildford would like to thank the following for their help in the staging of this afternoon's concert:-

Guildford Borough Council
Guildford Philharmonic Choir
Guildford Symphony Orchestra
The Surrey Advertiser
Mr. Jeremy Backhouse
Mr. Darrell Davison
Mr. Bill Bellerby
Mr. Ken Rowland
The Staff of the Civic Hall

and all the local businesses who supported this programme with advertising.



Guildford Philharmonic Choir presents
Saturday 11th March 2000 7.00 pm



Guildford Cathedral
GALA CONCERT

To celebrate the Millennium and 21 years of the twinning of Guildford and Freiburg

Bach: St. Matthew's Passion

*Guildford Philharmonic Choir
with Freiburger Bachchor*

Brandenburg Sinfonia

Helen Neeves Jeanette Ager Stephen Douse

Jeremy Backhouse

Tickets at £10 and £14 (with concessions) available from Guildford Civic on
(01483) 444555 or Roger Penny on (01483) 564076

**ENJOY GREAT MUSIC IN 2000 WITH THE
GUILDFORD SYMPHONY ORCHESTRA**

You are warmly invited to join the GSO (at the Guildford Civic unless otherwise shown) for any or all of the concerts planned for the first half of next year:

Saturday 22nd January at 1.00 pm: The second in this new series of **Guildford Family Concerts** providing musical entertainment for young and old. **Aled Jones** narrates *The Snowman*.

Sunday 13th February at 3.00 pm at the Royal Grammar School: the **Una Clark Young Artists Concert** in which five young performers of brilliant promise perform concerto movements with the orchestra and receive their Jellinek awards.

Sunday 26th March at 3.00 pm: The **Russian Gala** opens with RimskyKorsakov's *Flight of the Bumble Bee* and moves on to two of the great landmarks of Russian music: Tchaikovsky's first piano concerto and Rachmaninov's second symphony.

Sunday 14th May at 7.30 pm: The **Magic of Vienna** brings the season to a light-hearted and tuneful close with the music of Strauss and Lehar after the majesty of Brahms's first symphony and the ebullience of Mozart's overture to *The Marriage of Figaro*.

GSO Box Office: (01483) 533074