



# MUSIC FOR CHRISTMAS

1997

£1

**To benefit:**



# MUSIC FOR CHRISTMAS

Saturday 29th November 1997

GUILDFORD CATHEDRAL

with

**FIONA FULLERTON**

**FRANK RENTON**

**GUILDFORD PHILHARMONIC CHOIR**

Conductor: **Jeremy Backhouse**

**The BAND of the PARACHUTE REGIMENT**

Conductor: **Ian McElligott**, Director of Music

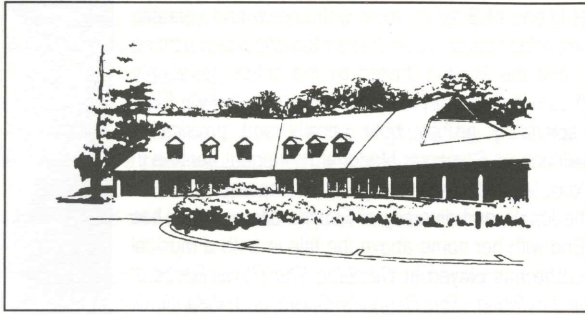
**Jeremy Filsell**: organ



***Procter & Gamble***

*wish the  
Princess Alice Hospice  
staff and patients  
a very  
Merry Christmas  
and  
Best Wishes for 1998.*





## THE PRINCESS ALICE HOSPICE

Since 1985 The Princess Alice Hospice has been caring for terminally ill patients and offering help and advice to their families and friends. The essence of Hospice care is the improvement of quality of life. This is achieved by the relief of pain and distress and by offering emotional, spiritual and practical support to patients and their carers.

More than a thousand patients are referred to the Hospice every year by GPs and doctors. They are accepted according to medical need, irrespective of age, race, religion or financial means.

One fact that surprises many people is that nearly 40% of the patients admitted to the Hospice each year as inpatients are discharged. As well as the 26 beds in the Hospice, we have a team of Community nurses who support the care of patients living at home. These patients can also visit the Gerry Todman Day Care Centre at the Hospice to receive medical care and join in with social activities. In addition, our social workers provide advice and support to patients and their families and a bereavement counselling service is offered to all next of kin.

The dedication and expertise of our doctors, nurses and all the other staff have helped The Princess Alice Hospice to develop a reputation as one of the leading organisations in the care of the terminally ill.

All the care the Hospice provides is given without charge to patients or their families. However, with our annual costs amounting to some £2.8 million a year, and NHS grants covering only around a quarter of this figure, we rely heavily on donations and voluntary income to fund our care. Please do support our work if you can.

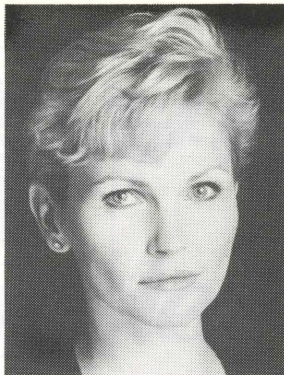
Please write to:

The Princess Alice Hospice, West End Lane, Esher, Surrey KT10 8NA.

Tel: 01372 468811.

**FIONA FULLERTON** is one of Britain's most well known and versatile actresses. Her starring roles include such diverse theatrical productions as Paulina in *Death and the Maiden* (hailed by the critics as 'simply superb', 'a portrait of considerable depth', 'astonishing dexterity'), Eliza in *Pygmalion* ('so splendidly grubby both vocally and physically', 'touchingly vulnerable') and as Somerset Maugham's elegant heroine in *The Constant Wife* ('dazzling', 'absolutely magnificent', 'sparkling').

One forgets the length and diversity of Fiona's career. She has starred in the West End with her name above the title in both a musical and a straight play. She has played in *Camelot*, *The Royal Baccarat Scandal*, *Gypsy*, *The Boyfriend*, *The Beggar's Opera* and *Valentine's Day*.



However she is probably best remembered for her major roles in films and television. She appeared in *The Charmer*, *A Taste for Death*, *The Life of Hemingway* and, of course, *Angels*. Her film roles include the Russian spy Pola Ivanova in the Bond movie *A View to a Kill* and Anastasia in *Nicholas and Alexandra* when she was only 14 years old. The big screen musical version of *Alice's Adventures in Wonderland* catapulted her to international stardom.

For two years Fiona was the international face of *Max Factor*. Her work also includes radio broadcasts and journalism, being a regular contributor to national newspapers and magazines. She is also a Director of the *Savoy Theatre* and an active committee member of the Royal Marsden Hospital. Fiona is married and has a daughter, Lucy.

**GUILDFORD PHILHARMONIC CHOIR** was formed by Guildford Borough in order to perform the major choral repertoire with the Guildford Philharmonic Orchestra. As well as performing well-known choral works, the choir specialises in 20<sup>th</sup>-century, particularly British, music. The choir is delighted that Sir David Willcocks, this country's most distinguished choral conductor, has agreed to be its new President.

The choir has worked with many eminent conductors, and as well as giving concerts in Guildford, it visits other British cities. Guildford is twinned with Freiburg, Germany, and in May 1998, the choir will join forces with the Freiburger Bachchor in Freiburg.

Tonight's choral items are conducted by the choir's Chorus Director, Jeremy Backhouse, who was appointed to the post in January 1995.

The choir's next major concert is on Saturday 7<sup>th</sup> March 1998 in Guildford Civic Hall in a performance of Elgar's *Dream of Gerontius*. If you would like more details about singing in the choir, please telephone 01932 221918.

**JEREMY BACKHOUSE** was Head Chorister at Canterbury Cathedral and later studied music at Liverpool University. He spent five years as Music Editor at the Royal National Institute for the Blind, transcribing print music into Braille, before moving to EMI Classics to work as a Literary Editor. Since 1990 he has been a Consultant Editor for EMI and other companies, and a freelance musician. In 1981 he became the first Conductor of the Vasari Singers, the chamber choir which won the prestigious Sainsbury's Choir of the Year competition in 1988. From 1991 to 1995 he was Music Director of Streatham Choral Society and the BBC Club Choir, conducting many of the major works of the choral repertoire.

In January 1995 he was appointed Chorus Director of the Guildford Philharmonic Choir. In April 1995 he conducted the BBC Singers for the first time in a programme of music by Lennox Berkeley broadcast on Radio 3, and has since conducted them in broadcast programmes of Holst, Rubbra, Massenet and Delibes.

**JEREMY FILSELL** was awarded an FRCO, winning all major prizes, at the age of 19 and studied Music as Organ Scholar at Keble College, Oxford. He continued with postgraduate studies in Piano Performance at the Royal College of Music, Organ Studies at Oxford and later in Paris.

As concert organist, he has recorded recitals and concertos for BBC Radio 3 and performed throughout the UK and extensively abroad.

**FRANK RENTON** has been a familiar and most welcome figure at all our Music For Christmas concerts since 1988, conducting the Band of the RMSM, Kneller Hall until 1992. In 1992 he left Kneller Hall after nearly 5 years as Director and is now pursuing a very successful freelance career.

Frank's musical career stretches from a seat on the cornet bench of the Black Dyke Mills Band as a schoolboy to principal musician in the British Army. He made his debut at the Wigmore Hall at the age of 12, performing Haydn's Trumpet Concerto, and went on to win a scholarship to the Royal Manchester College of Music where he came under the influence of Sir John Barbirolli. Further study at Kneller Hall preceded appointments with The Gordon Highlanders, The Parachute Regiment and the Royal Artillery, before his return to Kneller Hall as Director in January 1988.

Frank Renton is a broadcaster on BBC Radio 2 and the BBC World Service; an adjudicator, examiner, lecturer and writer; and principal conductor of a variety of ensembles including the British Concert Orchestra, the British Chamber Orchestra and the Grimethorpe Colliery Band. His conducting and compering have made him immensely popular with concert audiences all over Britain, and in the USA, Canada, Scandinavia and Australia.

This year Frank is celebrating his 10<sup>th</sup> Music for Christmas and such wonderful support is greatly appreciated by the Hospice.

### **THE BAND of the PARACHUTE REGIMENT    Conductor: Ian McElligott, Director of Music.**

The Parachute Regiment was formed on the 1st of August 1942 and was without musical support until 1948, when the 1st and 2nd Battalions each had a band attached to them. It was a further year before the 3rd Battalion could boast of its own band.

As a result of the 1985 defence review, the Battalion bands were disbanded and reformed to produce two Regimental bands – Falklands and Pegasus. In 1993 further reductions in defence expenditure resulted in the amalgamation of the Falklands and Pegasus bands to form The Band of The Parachute Regiment. Since its formation the band has given support to tours of Malaysia, Northern Ireland and Kenya. During the last two years, notable engagements have included the 50th anniversary commemorations of the D-Day Landings in Normandy, Operation Market Garden in Arnhem, Victory in Europe and Victory in Japan Days.

Between November 1994 and April 1995 the Band deployed to Paderborn in Germany, operating as the first Infantry Roulement Band providing musical support to British Infantry Battalions serving in the United Kingdom Support Corps. Upon returning to Aldershot, the Band resumed its primary role of providing the Regiment and its affiliated units with musical support. Furthermore, and with time permitting, the Band undertakes and enjoys many civil engagements, broadcasting and giving concerts and marching displays nationwide.

**The Director of Music Ian McElligott** was born into a musical family where both his parents were professional musicians. His mother, who now resides in the USA, is a concert pianist. During the Second World War his father was a percussionist with The Duke of Wellington's Regimental Band. At the end of the war they both pursued careers with the BBC and theatre.

In 1974 Ian McElligott joined the Army as a trumpet player with The Staff Band of The Royal Army Ordnance Corps. The following year he attended The Royal Military School of Music, Kneller Hall, for the year long instrumental course which culminated in him winning the coveted Frank Wright Cornet Prize. In 1983 he was selected to return to Kneller Hall to attend the Student Bandmaster's course. On graduation he won a total of seven awards and was appointed Bandmaster of The Normandy Band of The Royal Green Jackets, 1992 saw Ian McElligott again return to Kneller Hall on this occasion as the School Bandmaster. During this period he was responsible for the Fanfare Team which he conducted and composed for at many state and high profile engagements in the Capital.

In May 1994 Ian McElligott was honoured to be commissioned into The Parachute Regiment and subsequently appointed as the Director of Music. Over the past twenty years he has served in such diverse locations as Cyprus, Germany, Jordan, Portugal, Morocco and Gibraltar.

In addition to a hectic work schedule, Ian McElligott receives many requests for compositions and arrangements. Recent credits include writing for BBC Television and the Musicians Benevolent Fund. His latest commission is to provide material for the Royal Automobile Club which celebrates its centenary in 1997.

# MUSIC FOR CHRISTMAS 1997

## PROGRAMME

### FANFARE

#### AUDIENCE, CHOIR and BAND

Hark! The Herald Angels Sing arr. Willcocks

#### The BAND of the PARACHUTE REGIMENT

The Joy of Christmas Redhead arr. Marshall

#### GUILDFORD PHILHARMONIC CHOIR

Sussex Carol English trad. arr. Willcocks

Jesus Christ the apple tree Elizabeth Poston

Soloist: Graham Ross

*The Guildford Philharmonic Choir*

*Young Choirboy of the Year 1997*

I wonder as I wander Appalachian arr. John Rutter

Soloist: Catherine Boshier

*The Guildford Philharmonic Choir*

*Young Choirlgirl of the Year 1997*

Birthday Carol David Willcocks

#### FIONA FULLERTON reads .....

#### The BAND of the PARACHUTE REGIMENT

Christmas Song Tormé arr. Higgins

Soloist: Colour Sergeant Keith Davis

#### AUDIENCE, CHOIR and BAND

God Rest You Merry, Gentlemen Kocher arr. Willcocks

### INTERVAL

*Christmas stalls are now open in the Narthex.*

#### AUDIENCE, CHOIR and BAND

See amid the Winter's Snow John Goss arr. Willcocks

#### GUILDFORD PHILHARMONIC CHOIR

Nativity Carol John Rutter

Christmas Night 16<sup>th</sup> cent. French arr. Rutter

with Catherine Boshier & Graham Ross

A babe is born William Matthias

#### FIONA FULLERTON reads .....

#### AUDIENCE, CHOIR and BAND

Unto us is born a Son  
Tune from Piae Cantiones  
arr. Willcocks

#### The BAND of the PARACHUTE REGIMENT

(brass only), ORGAN

#### & GUILDFORD PHILHARMONIC CHOIR

A Merry Little Christmas  
Christmas Medley  
arr. Goff Richards

### FANFARE

#### AUDIENCE, CHOIR and BAND

O Come, All Ye Faithful arr. Willcocks

\* \* \* \* \*

*The words for all the audience Christmas Carols  
will be found on the following pages.*

## HARK! THE HERALD ANGELS SING

Hark! the herald-angels sing  
Glory to the new-born King;  
Peace on earth and mercy mild,  
God and sinners reconciled:  
Joyful all ye nations rise,  
Join the triumph of the skies,  
With th'angelic host proclaim,  
Christ is born in Bethlehem.

*Hark! the herald-angels sing  
Glory to the new-born King.*

Christ, by highest heav'n adored,  
Christ, the everlasting Lord,  
Late in time behold him come  
Off-spring of a virgin's womb:  
Veiled in flesh the God-head see,  
Hail th'incarnate Deity!  
Pleased as man with man to dwell,  
Jesus, our Emmanuel.

*Hark! etc.*

### **Unison**

Hail the heav'n-born Prince of Peace!  
Hail the Sun of Righteousness!  
Light and life to all he brings,  
Risen with healing in his wings;  
Mild he lays his glory by,  
Born that man no more may die,  
Born to raise the sons of earth,  
Born to give them second birth.

*Hark! etc.*

## GOD REST YOU MERRY, GENTLEMEN

God rest you merry, gentlemen,  
Let nothing you dismay,  
For Jesus Christ our Saviour  
Was born upon this day,  
To save us all from Satan's power  
When we were gone astray:

*O tidings of comfort and joy,  
comfort and joy,*

*O tidings of comfort and joy.*

### **Choir Only**

From God our heav'nly Father  
A blessed angel came,  
And unto certain shepherds  
Brought tidings of the same,  
How that in Bethlehem was born  
The Son of God by name:

The shepherds at those tidings  
Rejoicèd much in mind,  
And left their flocks a-feeding  
In tempest, storm and wind  
And went to Bethlehem straightway  
This blessèd babe to find:

### **Choir Only**

But when to Bethlehem they came,  
Whereat this infant lay,  
They found him in a manger,  
Where oxen feed on hay;  
His mother Mary kneeling,  
Unto the Lord did pray:

Now to the Lord sing praises,  
All you within this place,  
And with true love and brotherhood  
Each other now embrace;  
This holy tide of Christmas  
All others doth deface:

## SEE AMID THE WINTER'S SNOW

### *Choir only*

See amid the winter's snow,  
Born for us on earth below;  
See the tender Lamb appears,  
Promis'd from eternal years:

*All Hail, thou ever-blessed morn;  
Hail, redemption's happy dawn;  
Sing through all Jerusalem,  
Christ is born in Bethlehem.*

### *All*

Lo, within a manger lies  
He who built the starry skies;  
He who, throned in height sublime,  
Sits amid the cherubim:

*Hail, etc.*

### *Ladies only*

Say, ye holy shepherds, say  
What your joyful news today;  
Wherefore have ye left your sheep  
On the lonely mountain steep?

*All Hail, etc.*

### *Men only*

'As we watched at dead of night,  
Lo, we saw a wondrous light;  
Angels singing "Peace on earth"  
Told us of the Saviour's birth.'

*All Hail, etc.*

### *All*

Sacred infant, all divine,  
What a tender love was thine,  
Thus to come from highest bliss  
Down to such a world as this:

*Hail, etc.*

### *All unison*

Teach, O teach us, Holy Child,  
By thy face so meek and mild,  
Teach us to resemble thee,  
In thy sweet humility:

*Hail, etc.*

## UNTO US IS BORN A SON

Unto us is born a Son,  
King of quires supernal:  
See on earth his life begun,  
Of lords the Lord eternal,  
Of lords the Lord eternal.

### *Choir only*

Christ, from heav'n descending low,  
Comes on earth a stranger;  
Ox and ass their owner know,  
Becradled in the manger,  
becradled in the manger.

### *Men only*

This did Herod sore affray,  
And grievously bewilder,  
So he gave the word to slay,  
And slew the little child,  
and slew the little child.

### *Ladies only*

Of his love and mercy mild  
This the Christmas story;  
And O that Mary's gentle Child  
Might lead us up to glory,  
might lead us up to glory!

O and A, and A and O,  
Cum cantibus in choro,  
Let our merry organ go,  
Benedicamus Domino,  
benedicamus Domino.

## O COME, ALL YE FAITHFUL

O come, all ye faithful,  
Joyful and triumphant,  
O come ye, O come ye to Bethlehem;  
Come and behold him  
Born the King of Angels:  
    *O come, let us adore him,*  
    *O come, let us adore him,*  
    *O come, let us adore him,*  
    *Christ the Lord!*

### **Choir Only**

See how the shepherds,  
Summoned to his cradle,  
Leaving their flocks, draw nigh with lowly fear;  
We too will thither  
Bend our joyful footsteps:  
    *O Come etc.*

### **All in Unison (Choir descant)**

Sing, choirs of angels,  
Sing in exultation,  
Sing, all ye citizens of heav'n above;  
Glory to God  
In the highest:  
    *O Come etc.*

### **All in Unison**

Yea, Lord, we greet thee,  
Born that happy Morning,  
Jesu, to thee be glory giv'n;  
Word of the Father,  
Now in flesh appearing:  
    *O Come etc.*

The Princess Alice Hospice is very grateful to:

– ***Procter & Gamble*** for generously sponsoring this concert

– the Dean & Chapter of Guildford Cathedral

– this evening's artists for their support of the Hospice

– The Friends' Committees who have helped in so many ways this evening.

\* **CHRISTMAS WRAPPING PAPER**

\* **CHRISTMAS CARDS**

\* **SONY *MESSIAH* RECORDINGS**

\* **NOTELETS**

\* **TIES**

\* **etc.**

Available from stalls in the Narthex  
both before the concert and during the interval.

**15 years of**

## **MUSIC FOR CHRISTMAS**

<b>Venue</b>	<b>Guest</b>
1983 Guildford Civic Hall	
1984 Elmbridge Leisure Centre	Norman Vaughan
1985 Kingston Parish Church	Anthony Valentine
1986 Epsom, St Martin's Church	Michael Aspel
1987 Richmond Parish Church	Esther Rantzen
1988 Twickenham, St Mary's College	Derek Nimmo
1989 Guildford Civic Hall	Mike Yarwood
1990 Spelthorne Leisure Centre	Hannah Gordon
1991 Guildford Cathedral	Trevor McDonald
1992 Guildford Cathedral	Frank Renton
1993 Spelthorne Leisure Centre	John Cole
1994 Guildford Cathedral	Michael Buerk
1995 Guildford Civic Hall	William Franklyn
1996 Guildford Cathedral	Michael Aspel
1997 Guildford Cathedral	Fiona Fullerton

# Some Dates for your Diary



December 21 1997	<b>The Mayor of Epsom's Charity Concert</b>	Epsom Playhouse
May 15 1998	<b>Dove Ball</b>	The Queen's Stand Epsom Racecourse
June 13 1998	<b>Summer Fête</b>	Hospice Grounds

*For details of these and many other local events please contact  
DAVID BURLAND at the Hospice on 01372 468811.*



GUILDFORD  
PHILHARMONIC  
CHOIR

December 21 1997 2.30pm	The Mayor of Guildford's <b>Christmas Carols</b> (with Brass Ensemble) Civic Hall – Conductor: Jeremy Backhouse (In association with the Guildford Philharmonic and the Rotary Club)
March 7 1998	Elgar: <b>The Dream of Gerontius</b> Civic Hall – Conductor: Jeremy Backhouse
May 2 1998	Mozart: <b>Requiem</b> Guildford Cathedral – Conductor: En Shao (Principal Conductor, Guildford Philharmonic Orchestra)