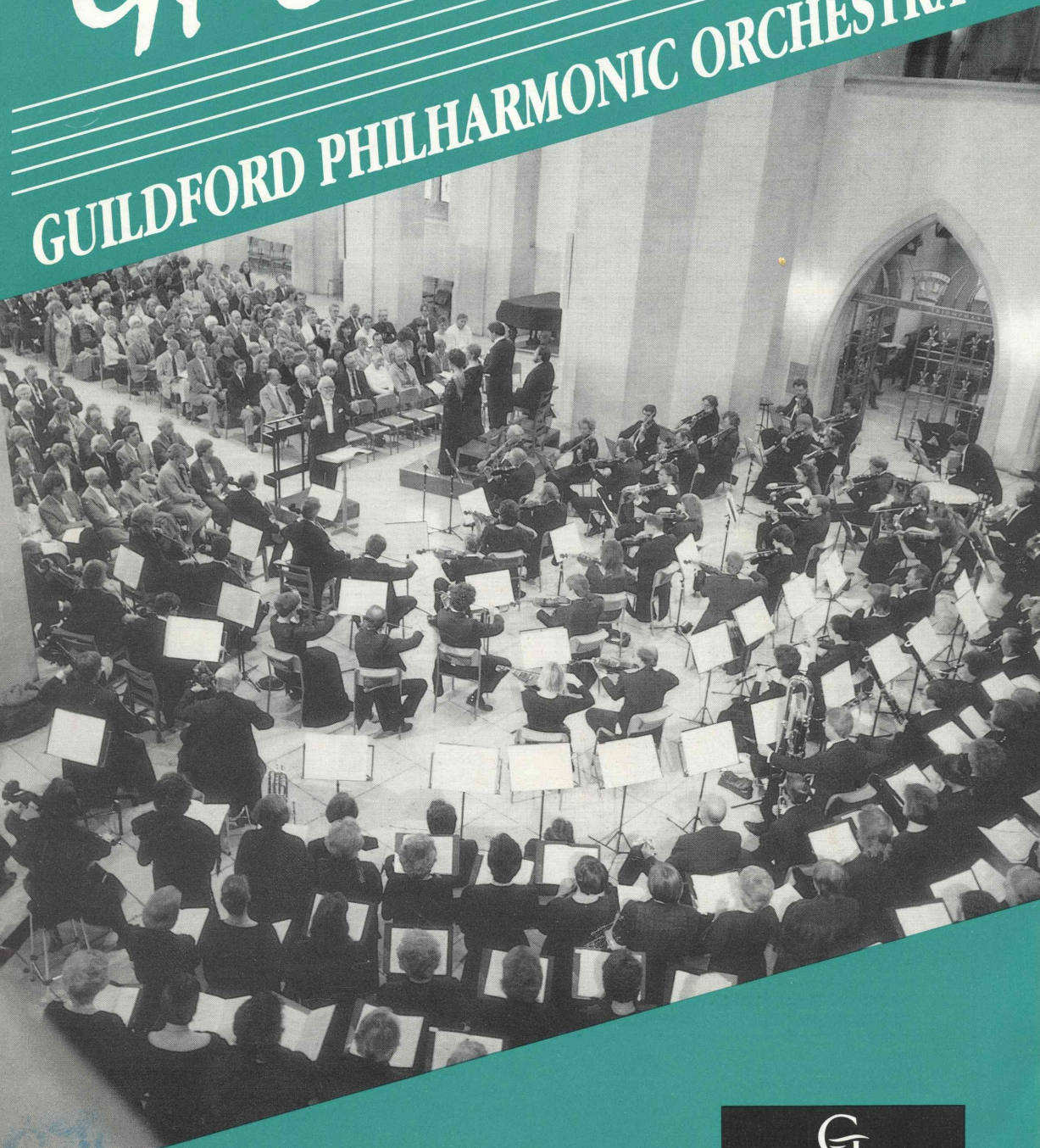


# GPO

## GUILDFORD PHILHARMONIC ORCHESTRA



GUILDFORD  
BOROUGH

Nandali Israel in Egypt 195

# GUILDFORD PHILHARMONIC ORCHESTRA

## 1991/92 SUBSCRIPTION SERIES CONCERTS

### SUNDAY 29 SEPTEMBER 1991 at 3.00pm THE HART BROWN CONCERT

Overture: Carnival	Dvorak
Violin concerto in E minor	Mendelssohn
Symphony No. 2 in Eb	Elgar
GYORGY PAUK	violin
SIR CHARLES GROVES	conductor

Sponsored by Hart Brown & Co., Solicitors

### SATURDAY 12 OCTOBER 1991 at 7.30pm CIVIC CONCERT

Chacony in G minor for strings	Purcell/Britten
Symphony No. 104 in D (London)	Haydn
Piano Concerto No. 2 in Bb	Brahms
PETER FRANKL	piano
SIR CHARLES GROVES	conductor

Hosted by the Mayor of Guildford.  
Sponsored by BOC. 

### SATURDAY 26 OCTOBER 1991 at 7.30pm

Pavane pour une infante defunte	Ravel
Clarinet Concerto in A (K.622)	Mozart
Symphony No. 1 (Winter day-dreams)	Tchaikovsky
MICHAEL COLLINS	clarinet
JACEK KASPSZYK	conductor

Pre-concert talk in the Civic Hall at 6.15pm with JACEK KASPSZYK, for ticket holders.

### SATURDAY 9 NOVEMBER 1991 at 7.30pm

Israel in Egypt	Handel
RUTH HOLTON	soprano
NICOLA JENKIN	soprano
MICHAEL CHANCE	alto
PHILIP SHEFFIELD	tenor
STEPHEN ADLER	bass
GRAHAM TITUS	bass
GUILDFORD PHILHARMONIC CHOIR	
NEVILLE CREED	conductor

### SUNDAY 24 NOVEMBER 1991 at 3.00pm

Suite: Midsummer Night's Dream	Mendelssohn
Trumpet Concerto	Horowitz
Symphony No. 1 in Bb minor	Walton
GARETH BIMSON	trumpet
VERNON HANDLEY	conductor

### SATURDAY 7 DECEMBER 1991 at 7.30pm CROSSLEY CLITHEROE MEMORIAL CONCERT

Lieutenant Kije	Prokofiev
Violin Concerto No. 1 in D	Prokofiev
Pictures from an Exhibition	Mussorgsky
	(orchestrated by ravel)
DAVID NOLAN	violin
LATTHIAS BAMERT	conductor

Pre-concert talk in the Civic Hall at 6.15pm with Terry Barfoot for ticket holders.

### SUNDAY 19 JANUARY 1992 at 3.00pm

Overture: Marriage of Figaro	Mozart
Piano Concerto No. 2 in C minor	Rachmaninof
Symphony No. 9 in E minor	
(From the New World)	Dvorak
NIKOLAI DEMIDENKO	piano
JIRI STAREK	conductor

### SUNDAY 2 FEBRUARY 1992 at 3.00pm

Overture: Leonore No. 3	Beethoven
Piano Concerto No. 5 in Eb (Emperor)	Beethoven
Symphony No. 7 in A	Beethoven
JOHN LILL	piano
SIR CHARLES GROVES	conductor

### SATURDAY 7 MARCH 1992 at 7.30pm in GUILDFORD CATHEDRAL

Fantasia on a Theme of Thomas Tallis	Vaughan Williams
Oboe Concerto	Strauss
Benedictus	Blake
MALCOLM MESSITER	oboe
MARTYN HILL	tenor
GUILDFORD PHILHARMONIC CHOIR	
SIR CHARLES GROVES	conductor

Pre-concert talk in the GUILDHALL at 10.30am with HOWARD BLAKE, for ticket holders.

### SUNDAY 29 MARCH 1992 at 3.00pm

Concerto Grosso Op. 6 No. 2	Handel
Concerto for Two Violins	Bach
(Soloists: Hugh Bean and John Ludlow)	
Serenade for Strings	Dag Wiren
Holberg Suite	Grieg
Two Aquarelles	Delius
Simple Symphony	Britten
HUGH BEAN	director

### SUNDAY 12 APRIL 1992 at 3.00pm

Ballet Suite: Rodeo	Copland
Konzertstuck for Snare Drum	
and Orchestra	Masson
Symphonic Dances from 'West Side Story'	Bernstein
EVELYN GLENNIE	percussion
BARRY WORDSWORTH	conductor

### SATURDAY 2 MAY 1992 at 7.30 pm

National Anthem	arr. Britten
Cello Concerto in E minor	Elgar
Symphony No. 1 (Sea Symphony)	Vaughan Williams
FELIX SCHMIDT	cello
ALISON PEARCE	soprano
BRIAN RAYNOR COOK	baritone
GUILDFORD PHILHARMONIC CHOIR	
SIR CHARLES GROVES	conductor

Pre-concert talk in the Civic Hall at 6.15pm with SIR CHARLES GROVES, for ticket holders.

## RECORD CORNER

POUND LANE, GODALMING  
Tel: Godalming 422006

Records – Tapes – CD's  
Classical – Jazz – Popular  
Spoken Word

Separate Specialised Depts  
with listening facilities

Operas & Ballets on video

Sheet Music including:

Associated Board Requirements Musical  
accessories

ie Strings, Recorders etc

Second Hand LP's, Tapes, CD's

Trade In Service available

Access & Visa welcome

Mail Order Service

Opening Hours 9.15am – 5.15 pm



*One of  
Britain's  
finest music  
shops*

## PINKHAM PIANOS

*PROBABLY THE MOST  
COMPREHENSIVE RANGE OF*

**SHEET MUSIC**  
and  
**MUSICAL INSTRUMENTS**  
IN THE UK

Approximately 150 Violins	from £29 to £3,000
Clarinets	from £89 to £2,300
Trumpets	from £95 to £1,200
Guitars	from £49 to £1,500
Flutes	from £99 to £3,000
Approximately 80 Pianos	from £790 to £125,000

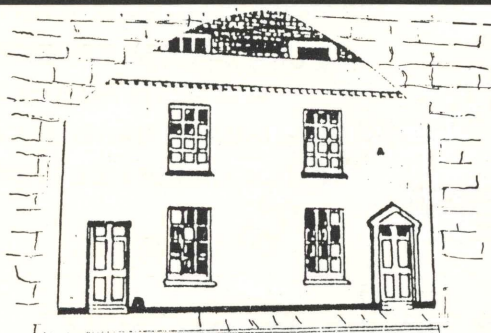
**INTEREST FREE CREDIT**

**GUILDFOORD**

Tunsgate Square  
(0483) 578711

*meet concert pianist CLIVE PINKHAM  
in his shop where he is always pleased  
to give help and advice*

**MANUFACTURER OF PIANOS**



**HUTSON POOLE WILLIAMSON  
SOLICITORS**

with

**NOTARY PUBLIC**

17/18 QUARRY STREET,  
GUILDFORD, GU1 3XA

Tel: (0483) 65244

**WE PROVIDE A COMPREHENSIVE SERVICE  
TO PRIVATE AND CORPORATE CLIENTS**

RESIDENTIAL/COMMERCIAL CONVEYANCING  
LICENSING LAW · TOWN & COUNTRY PLANNING  
GENERAL COMPANY & PARTNERSHIP LAW · EMPLOYMENT LAW  
DIVORCE · HIGH COURT & COUNTY COURT WORK  
PROBATE & TRUSTS · INVESTMENT & FINANCIAL PLANNING  
LANDLORD & TENANT LAW · DEBT COLLECTION  
PERSONAL INJURY

**UNIVERSITY OF SURREY  
DEPARTMENT OF MUSIC**



Members of the public are most welcome at all our concerts, which take place during term-time in the Performing Arts Technology Studios on campus. Wednesday Lunchtime Recitals start at 1.15 pm and are admission free. Concerts are also held on selected Thursday and Sunday evenings and afternoons.

Please call the Department if you would like to be placed on our mailing list.

*Further information is available from: -*

The Secretary  
Department of Music  
University of Surrey  
Guildford, GU2 5XH  
(Tel: Guildford 509317)

**1991-92 Term Dates**

*Autumn Term:* 14 October to 20 December 1991

*Spring Term:* 13 January to 20 March 1992

*Summer Term:* 27 April to 3 July 1992

sing with



# Guildford Philharmonic Choir

Your opportunity to join this exciting choir in performances with Sir Charles Groves and the Guildford Philharmonic Orchestra  
Chorus Master: Neville Creed

SEASON 1991/92

**Fauré** : REQUIEM

**Blake** : BENEDICTUS

**Handel** : ISRAEL IN EGYPT

**Vaughan Williams** : SEA SYMPHONY

Choral Workshop

Christmas Carols

Following the outstanding success of the choir's visit to Freiburg - Guildford's 'twin town' in Germany - the Freiburg Bach Choir will visit Guildford in 1992 and the Guildford Philharmonic Choir will tour Southern Germany in 1993.

Details from:

Mrs K Atkins,

The Lodge, Allen House Grounds

Chertsey Street, Guildford

Surrey GU1 4HL

Tel: 0483 444666

## Guildford Philharmonic Society

(Charity Registration 288295)

The GUILDFORD PHILHARMONIC SOCIETY, for the Friends of the Guildford Philharmonic Orchestra, is Guildford's foremost musical appreciation group. It was founded primarily to encourage both its own members and the public at large to be aware of, and to enjoy, the Orchestra's season of concerts in the Civic Hall, the Hall originally built for Guildford's own orchestra. And it provides opportunities to enjoy a wide variety of first class musical events at special Members' Evenings.

### MEMBERS EVENTS 1991/92

1991

**29th September, Civic Hall Restaurant**

New members' RECEPTION

**21st November, Methodist Hall**

Evening with Kate Hill (flute) (GPO)

1992

**12th January, Civic Hall Restaurant**

New Year Party

**26th February, Guildford Guildhall**

Quartet (details to follow) *Wed.*

**29th March, Civic Hall Restaurant**

Meet the Orchestra *- Sun.*

**8th April, Methodist Hall**

AGM & Karen Downs

### MEMBERSHIP RATES are:

Annual Subscription (minimum)	£6.00
Joint Subscription (husband and wife)	£10.00
Persons under the age of 18 (minimum)	£4.00
Retired pensioner (minimum)	£4.00

Apply to: Mrs Iris Bennett, Applegarth, Cranleigh, Surrey GU6 7LY

**SUPPORT YOUR ORCHESTRA!! IT NEEDS YOU!!**

# SURREY MUSIC STORE



QUALITY INSTRUMENTS TO RENT OR BUY  
DELIVERED TO YOUR DOOR

Good Range of Sheet Music, Accessories  
and Gifts

Fast, reliable service on all orders and enquiries

**Tel: Woking (0483) 729319**

76 High Street, Horsell, Woking

GUILDFORD BOROUGH CONCERTS  
SEASON 1991/92

CIVIC HALL, GUILDFORD  
SATURDAY 9 NOVEMBER 1991  
at 7.30 p.m.

# Guildford Philharmonic Orchestra

Leader: JOHN LUDLOW

RUTH HOLTON, Soprano  
NICOLA JENKIN, Soprano  
MICHAEL CHANCE, Alto  
PHILIP SHEFFIELD, Tenor  
STEPHEN ALDER, Bass  
GRAHAM TITUS, Bass  
GUILDFORD PHILHARMONIC CHOIR  
NEVILLE CREED, Conductor

---

This Concert is promoted by Guildford Borough with financial support from the South East Arts Association.

The Guildford Philharmonic Orchestra gratefully acknowledges the support of its major sponsors:

HART BROWN & Co., Solicitors  
BOC

The Guildford Philharmonic Orchestra & South East Music Trust acknowledge the generous support of the Musicians' Union.

The Orchestra is pleased to acknowledge the Corporate Memberships of:

BOC  
HART BROWN & CO, Solicitors  
HUTSON POOLE & CO  
PLASTIC COATINGS LTD



**Ruth Holton**  
Soprano

Ruth Holton studied music at Clare College, Cambridge, where she was a choral exhibitioner. After graduating in 1983 she studied with Elizabeth Lane and Nancy Long. Since then, she has led an increasingly busy life as a freelance singer in London. She has worked regularly with the Tallis Scholars and the Monteverdi Choir. In the last three years she has appeared as a soloist on several recordings of major baroque works with John Eliot Gardiner, including Bach's St. John Passion, the award-winning recording of Handel's Jephtha, works by Schütz and Buxtehude and the role of Filia in Carissimi's Jephtha.

Her work has taken her all over Europe, with recitals in Germany, France and the Gloucester Three Choirs Festival. She was a soloist with the King's Consort directed by Robert King in both the Bruges and Turku Festivals. Also she featured on Japanese television singing solos in Bach's Magnificat and Handel's Dixit Dominus during a world tour by the Monteverdi Choir. She is equally at home in both baroque and modern works, ranging from Mozart's Magic Flute (the Queen of the Night) to Mendelssohn's Elijah and Kodaly's Missa Brevis. Recordings include the part of the Angel in Schütz's Christmas Story and Belinda in Purcell's Dido and Aeneas. She studies with Julie Kennard. As a guest soprano with the soloist ensemble, Pro Cantione Antiqua, Ruth appeared in the 1990 Festival in Citta di Castella singing Carissimi's 'L' Homme Arme' Mass, and the 1990 Cambridge Festival singing Monteverdi's '1610 Vespers'.



**Nicola Jenkin –  
Soprano**

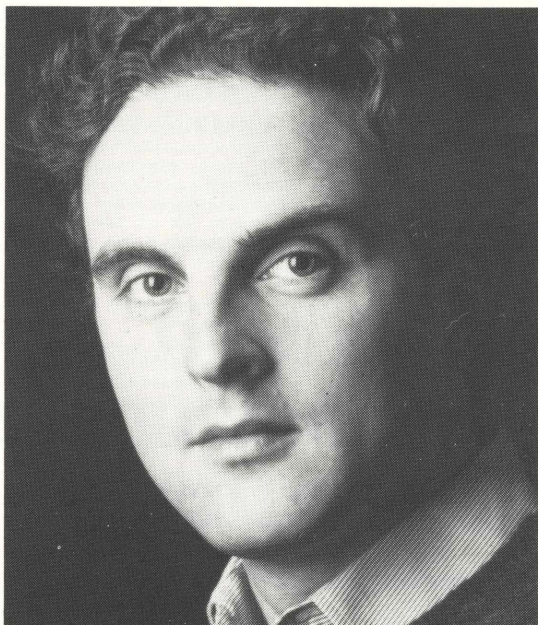
Nicola Jenkin made her debuts at the Royal Albert Hall under Sir David Willcocks and at the Usher Hall, Edinburgh under Philip Ledger as the soprano soloist in Messiah. Since studying at the Royal College of Music, and in Vienna with an Austrian Government Scholarship, she has pursued a wide and varied career.

Nicola's work has taken her throughout the world. She has sung Bach in Kanas City, Handel in Tokyo and on Japanese Television, the role of Amor in Fux's opera 'Orfeo' at the Vienna Festival, which was subsequently broadcast by the BBC, and over a dozen performances of Monteverdi's Vespers in, amongst others, London, Salzburg, Innsbruck, Strasbourg, and Aix-en-Provence.

Included in Nicola's list of solo performances available on record are Monteverdi's Vespers with the Sixteen, 1st Witch with the St James' Players in Dido & Aeneas, and, due for release this year, several recordings with John Eliot Gardiner and the Monteverdi Choir including Handel's Dixit Dominus and the role of a Cretan Woman in Mozart's Idomeneo.

These last two followed an extensive tour throughout Europe, where she appeared in Portugal, Paris, Amsterdam, Germany, Salerno in Italy and at the Queen Elizabeth Hall.

More recently, Nicola sang the part of Galatea in a staged performance of Handel's pastorella 'Acis & Galatea' for Anthony Rolfe Johnson's festival at Gregynog in Wales where her co-stars were two live doves!



**Michael Chance  
Alto**

Michael Chance was a choral scholar at King's College, Cambridge, where he read English. He has now developed a career which spans opera, oratorio, recital and recordings and is now one of the world's most sought-after counter-tenors.

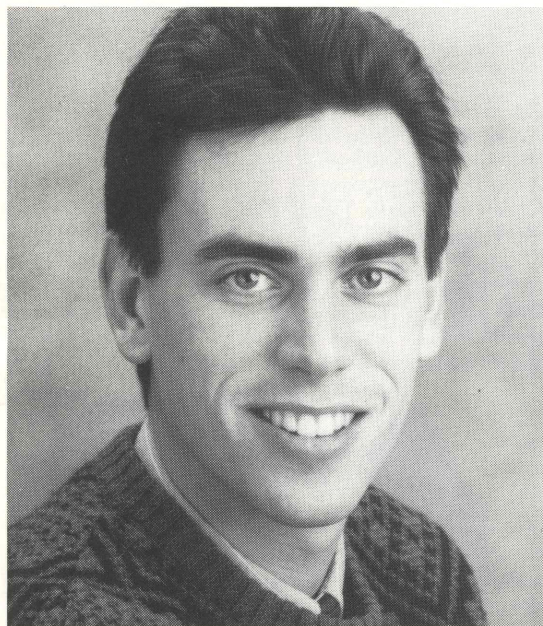
His performances in oratorio are numerous and widespread: in previous seasons he has appeared at New York's Lincoln Center, in Moscow, Budapest, East Berlin, in Japan and throughout Western Europe. Among the conductors with whom he performs regularly are Franz Brueggen, John Eliot Gardiner, Franz Welser-Moest, Gustav Leonhardt, Jane Glover, Trevor Pinnock and Nicholas Kraemer. His recent concerts have included Handel's "Solomon" in Berlin and "The Messiah" in Lausanne and Barcelona.

Michael Chance has made some thirty recordings, including the two great Passions and the "B Minor Mass" of JS Bach with John Eliot Gardiner, Handel's "Messiah" and Purcell Odes with Trevor Pinnock, a second recording of Bach's "B Minor Mass" with Franz Brueggen, "Carmina Burana" with the LPO, Gluck's "Orfeo" and several highly-received recital records with the King's Consort and Fretwork Consort of Viols.

His television appearances include "A Night at the Chinese Opera" and "Death in Venice" and he has also given two solo recitals at London's Wigmore Hall.

Future engagements include "The Return of Ulysses" at the English National Opera and with the Netherlands Opera (for whom he will also sing

Oberon in "A Midsummer Night's Dream"), "Death in Venice" at Covent Garden and at the 1992 Glyndebourne Festival, a new production of "Julius Caesar" for Scottish Opera and concerts, recitals and recordings with major baroque groups throughout Europe and North America.



**Philip Sheffield**  
Tenor

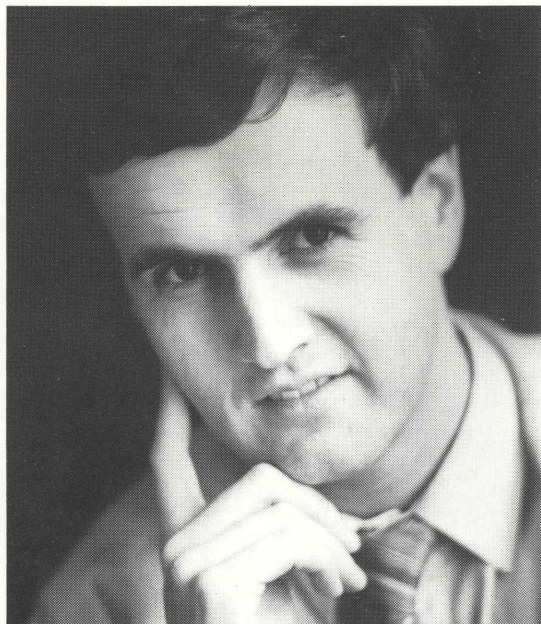
Philip Sheffield studied English at Cambridge University and went on to post graduate studies at the Guildhall School of Music and Drama and the Opera School of the Royal College of Music, where he was the recipient of a Countess of Munster Trust Award. He is currently studying with Philip Langridge and Audrey Langford.

Recent operatic engagements include appearances with Opera Northern Ireland, the Buxton Festival, Lucerne Opera, the Munich Biennale, the Monnaie, Brussels as well as Glyndebourne.

Philip Sheffield's concert appearances include performances in Israel, and with the English Chamber Orchestra in the Gstaad Festival. He has also worked with the Berlin Symphony Orchestra in the Philharmonie, and performed Stravinsky's Renard with the Ensemble Modern in Frankfurt, Berlin and Vienna. He has also made many appearances throughout the UK, including Monteverdi's Orfeo conducted by Roger Norrington at the BBC Proms in 1986, Bach's B Minor Mass and L'Incoronazione di Poppea, also both with Roger Norrington, The Seven Deadly Sins with the London Sinfonietta conducted by Lothar Zagrosek at the 1988 Proms, a work he also performed at the Barbican with the

London Symphony Orchestra and The Messiah with the Bournemouth Sinfonietta conducted by Kenneth Montgomery.

Future plans include Der Ferne Klang with Opera North, Messiah with the Royal Flanders Philharmonic Orchestra and Schreker's Der Schatzgraber with Dutch radio.



**Stephen Alder**  
Bass

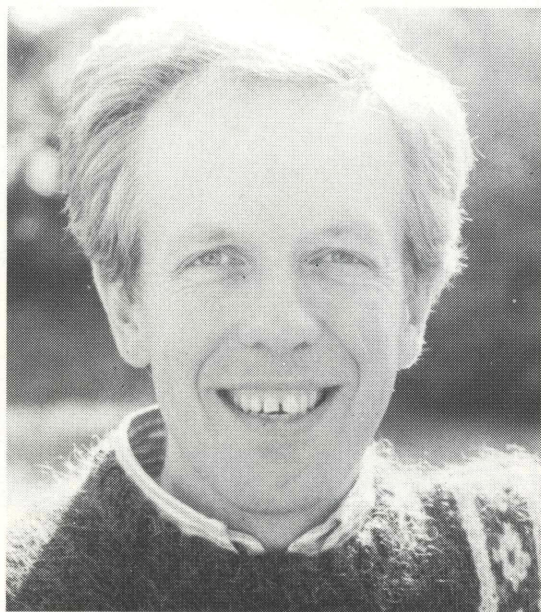
Stephen Alder, born in Cambridge, studied singing with Noelle Barker at the Guildhall School of Music & Drama, and now learns with Jessica Cash. He has sung in many countries, including China, USA, Brazil, and most European countries.

He has sung in oratorio and recital throughout the UK; performed in all London's major concert halls, including two recitals in the Purcell Room and Mozart's Requiem in the Queen Elizabeth Hall and St. John's Smith Square. He has also appeared in the Flanders Festival.

He has sung with the French group "La Chappelle Royale" under Philippe Herreweghe - broadcast on Spanish radio. He has sung frequently with the BBC Singers and worked there with many leading conductors such as Pierre Boulez and Seiji Ozawa.

A CD of his own baroque group "The Friends of Apollo" performing Bach's Coffee & Peasant cantatas has met with widespread international acclaim, including being highly recommended by the BBC's record review programme, and from the German press: "I have never heard parts of the Coffee cantata emerge as sparkling, as invigorating, as here."

Recent engagements have included the arias in Bach's St. Matthew Passion in Rome and Bach's St. John Passion in Singapore. He has sung Elijah, Haydn's Creation and Faure's Requiem. In 1989 he sang the Coffee Cantata in the Tilford Festival. In 1990 he sang two performances of Durufle's Requiem for BBC Wales and the arias in Bach's St. John Passion for Richard Hickox. He also sang as soloist with the BBC Welsh Chorus on two further occasions; and 1991 has included The London Handel Festival and the Tilford Festival.



**Graham Titus**  
Baritone

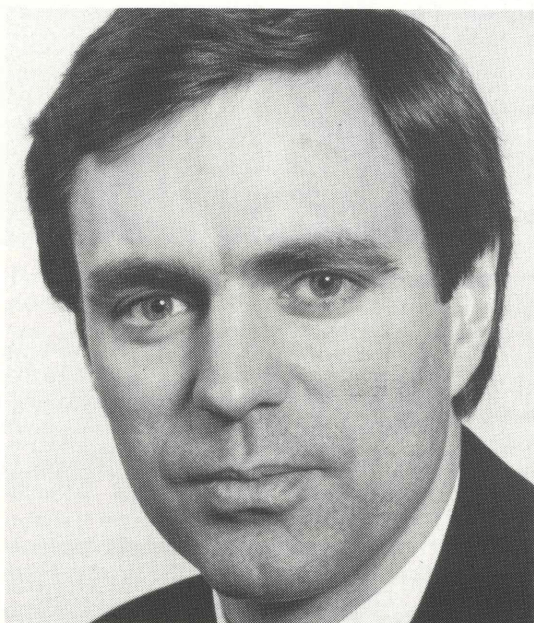
Born in Newark, Graham Titus began his musical career as organ scholar of Clare College, Cambridge, where he read music. However, on leaving Cambridge, he scored immediate success as a singer and furthered his vocal studies with Joseph Hislop and Elizabeth Flemming.

After joining Glyndebourne Festival Chorus, he made his London concert debut in the Purcell Room as the winner of the Young Musicians Platform and, in the same year, was a finalist in the Leeds National Musicians Platform, which led to a television appearance (Schubert Lieder) and a radio broadcast (Schumann's "Dichterliebe"). In the following year, he was a prize winner in 's-Hertogenbosch International Singing Competition, and subsequently appeared on Dutch radio and television. Since then he has been a regular broadcaster for Radio 3 - Lieder by Brahms, Schumann, and "The Lied before Schubert"; he has performed with the Halle (Goehr's "Sonata about Jerusalem") and at the Proms (Nelson

Mass); he has toured Mahler's "Kindertotenlieder" with the Ballet Rambert; and has given recitals at the Wigmore Hall.

In the world of opera, he has performed roles for English National Opera, Opera North, London Opera Factory (including the televised performance of Birtwistle's "Punch and Judy"), the Handel Opera Society and the New Opera Company. His radio recordings include Arne's "Judith" and Verdi arias.

Recent work includes concerts at St. John's Smith's Square (with Leon Lovett), Romsey Abbey, Salisbury Cathedral (under Richard Seal), while future engagements include Worcester Choral Society (with Donald Hunt), Lincoln Cathedral (Colin Walsh), Smith's Square (Julian Williamson), Queen Elizabeth Hall (Gregory Rose), L'Enfance du Christ (Ron Corp), Hereford Cathedral (Roy Massey), among many others.



**Neville Creed**  
Conductor

Neville Creed began his conducting career whilst a Choral Scholar at Trinity College, Cambridge. He then became Director of Choral Music at Tiffin School in Kingston-upon-Thames, providing choirs for several highly-acclaimed recordings on radio, television and disc. The Tiffin Boys' Choir recording of Mahler's 8th Symphony with The London Philharmonic under Klaus Tennstedt gained a nomination for a 'Grammy' award. During this time he became Conductor of the Milton Keynes Chorale and Assistant Chorus Master of the London Philharmonic Choir.

In 1986 he was awarded a scholarship to study conducting at the Guildhall School of Music where he won the Ricordi Conducting Prize. Whilst at the Guildhall he conducted the second British staging of the opera "Julietta" by Martinu. Since completing his studies he has founded the London Musici Singers, been appointed Musical Director of the Bournemouth Symphony Chorus and the Guildford Philharmonic Choir, as well as being invited to return to the Guildhall to conduct. In 1988 he won the second prize in the First International Choral Conducting Competition held in Italy and in 1991 won a Semi-Final prize in the Leeds competition for Orchestral Conducting.

Last summer he conducted the European Community Chamber Orchestra in France and he regularly conducts in Denmark. He has given concerts with the Bournemouth Sinfonietta, Bournemouth Symphony Orchestra, Guildford Philharmonic Orchestra, The Royal Philharmonic 'Pop's' Orchestra and The Royal Philharmonic Orchestra.

#### **Guildford Philharmonic Choir**

The Guildford Philharmonic Choir was formed by Guildford Borough in order to perform the major choral repertoire with the Guildford Philharmonic Orchestra. As well as performing well-known choral works, the choir specializes in twentieth century British music and this has led to recordings of Gerald Finzi's 'Intimations of Immortality' with the Guildford Philharmonic Orchestra and Patrick Hadley's 'The Trees So High' with the Philharmonia Orchestra, both recordings being conducted by Vernon Handley.

The choir is conducted by some of the most eminent British Musicians including Sir Charles Groves (Principal Conductor), Vernon Handley and Sir David Willcocks. As well as giving frequent concerts in Guildford, the choir occasionally visits other British cities. In 1988 the Guildford Philharmonic Choir visited Paris, last year joined forces with the Freiburger Bach Choir in Freiburg Munster, and hopes to return to Freiburg in 1993.

The Choir is trained by Neville Creed, who was appointed Chorus Master in 1987 and he is assisted by Peter White. Lynette Newman is the Choir's accompanist.

The Choir's plans for next year include performances of Blake's 'Benedictus', Vaughan Williams' 'Sea Symphony', a choral workshop and a summer concert.

#### **Israel in Egypt Handel 1685 – 1759**

"Israel in Egypt" differs from Handel's other Old Testament oratorios in that it is concerned not with individual people, but with nations. Consequently, it is on an epic scale where the role of the chorus is central. The style is similar to that used in the anthems written for George II's coronation in 1727. Handel's audience would have expected the usual abundance of extended solo items and objected when they were so scarce. Hence it was not a commercial success although it attracted a group of vociferous admirers.

The work was composed in 1738 and first performed at the Kings Theatre, Haymarket in 1739. Large forces are used: the choral movements are often for two four-part choirs and the orchestra includes trombones as well as the usual trumpets and timpani. Handel's original plan was in three parts, the first already existing as an entirely choral anthem written for the funeral of Queen Caroline entitled "The ways of Zion do mourn". He was always prepared to use existing material in new ways and probably saw the opportunity for an oratorio using the funeral anthem. The rest of the composition therefore followed a similar choral design.

"Exodus" relates the story of the Israelites deliverance, concentrating on the drama of the plagues of frogs, blotches and blains, flies, lice and hailstones, as well as the departure from Egypt and escape across the Red Sea. "Moses' Song" focuses on the liberation of the Israelites in an extended celebration of victory. The ideas for the text are likely to have come from Charles Jennens who produced a similar plan for "Messiah" three years later.

After the first performance, the funeral anthem was dropped probably because its sombre character seemed inappropriate for the concert hall. As is customary, the final two parts will be performed tonight.

#### **Israel in Egypt – Exodus**

##### *Recitative. Tenor*

Now there arose a new king over Egypt, which knew not Joseph; and he set over Israel taskmasters to afflict them with burdens, and they made them serve with rigour. *Ex. i. 8, 11, 13.*

##### *Alto and Chorus*

And the children of Israel sighed for reason of the bondage, and their cry came up unto God. They oppressed them with burdens, and made them serve with rigour; and their cry came up unto God. *Ex. ii. 23; i. 11, 13.*

##### *Recitative. Tenor*

Then sent He Moses, His servant, and Aaron

*Air. Alto*

Thou shalt bring them in, and plant them in the mountain of Thine inheritance, in the place, O Lord, which Thou hast made for Thee to dwell in, in the Sanctuary, O Lord, which Thy hands have established. - Ex. xv. 17.

*Chorus*

The Lord shall reign for ever and ever. Ex. xv. 18.

*Recitative. Tenor*

For the horse of Pharaoh went in with his chariots and with his horsemen into the sea, and the Lord brought again the waters of the sea upon them; but the children of Israel went on dry land in the midst of the sea. - Ex. xv. 19.

*Chorus*

The Lord shall reign for ever and ever. Ex. xv. 18.

*Recitative. Tenor*

And Miriam the prophetess, the sister of Aaron, took a timbrel in her hand; and all the women went out after her with timbrels and with dances. And Miriam answered them: Ex. xv. 20, 12.

*Soprano and Chorus*

Sing ye to the Lord, for He hath triumphed gloriously; the horse and his rider hath He thrown into the sea. Ex. xv. 21, 18.

**GUILDHALL, GUILDFORD**  
22 NOVEMBER 1991 at 12.30 pm  
LUNCHTIME RECITAL

MARTIN MYSLIVECEK (Guitar).

Reserved seats £3.00., Bookable at the Guildhall.  
Tel: Reservations (0483) 444035 or (0483) 444666 or (0483) 444999 OR AT THE DOOR

**SUNDAY**

**SATURDAY 24 NOVEMBER 1991 at 3.00 pm**  
Civic Hall, Guildford

Overture and Scherzo  
Midsummer Night's Dream  
Trumpet Concerto  
Symphony No 1 in Bb minor

GARETH BIMSON  
VERNON HANDLEY

MENDELSSOHN  
HOROVITZ  
WALTON  
Trumpet  
Conductor

Tickets: £9.00., £8.00., £7.00.,  
available from Box Office 0483 444555

**SATURDAY 7 DECEMBER 1991 at 7.30 pm**  
Civic Hall, Guildford

Crossley Clitheroe Memorial Concert

Lieutenant Kije  
Violin Concerto No 1 in D  
Pictures From an Exhibition

PROKOFIEV  
PROKOFIEV  
MUSSORGSKY  
(Orchestrated by Ravel)

DAVID NOLAN  
MATTHIAS BAMERT

Violin  
Conductor

Pre-concert talk in the Civic Hall at 6.15 pm with Terry Barfoot for ticket holders

Ticket prices: £9.00., £8.00., £7.00. available from the Civic Hall Box Office Tel: (0483) 444555. Children aged 16 and under half price.

**NOW BOOKING!!**

**XMAS & NEW YEAR FESTIVITIES**

**JOIN US on**

**- SUNDAY 8 DECEMBER at 3 pm -**

**Family Carols with presenter TIMOTHY WEST and the Guildford Philharmonic Orchestra/Choir and the Cathedral Choristers. Conductor Neville Creed.**

**Tickets £7 & £5**

**(This concert is presented by the Rotary Club of Guildford & Guildford Borough).**

**Swing into the New Year on SUNDAY 12 JANUARY at 7.30 pm with**

**RON GOODWIN in concert**  
Programme includes selections from Disneytime, South Rampart Street Parade, Stardust, ET, 633 Squadron, Magnificent Men in Their Flying Machines.

**Tickets £9.00, £8.00, £7.00**

All tickets available from the Civic Hall Box Office 0483 444 555 (Half price concessions for children & retired people over 60).

**GUILDFORD PHILHARMONIC ORCHESTRA**  
Principal Conductor: **SIR CHARLES GROVES**

**First Violins:**

John Ludlow  
Joan Atherton  
Sheila Beckensall  
Ysobel Danks  
Hywel Davies  
Karen Downs  
Patricia Lovell  
Peter Newman  
Martin Palmer  
Philip Winter

**Basses:**

Jeremy Gordon  
Maurice Neal  
Peter Box

**Oboes:**

Vicky Walpole  
Claire Philpott

**Bassoons:**

Anna Meadows  
Hilary Milne

**Trumpets:**

Gareth Binson  
David Archer

**Trombones:**

John Edney  
David Hissey

**Bass Trombone:**

Martin Nicholls

**Timpani:**

Roger Blair

**Continuo**

**(Organ and Harpsichord)**  
Ian Watson

**Violas:**

John Meek  
John Graham  
Frederick Campbell  
David McCreadie  
Paul Appleyard  
Robert Winquist

**Cellos:**

Geoffrey Thomas  
John Stilwell  
John Franca  
John Kirby

## GUILDFORD PHILHARMONIC CHOIR

### First Sopranos

Louise Barnfield  
Susan Barton  
Marion Blackburn  
Jilly Bradshaw  
Mary Broughton  
Elaine Chapman  
Celia Embleton  
Josephine Field  
Jenny Hakim  
Sue Maddox  
Elizabeth McCracken  
Diana Medlicott  
Alison Munro

### Second Sopranos

Jacqueline Alderton  
Kathleen Aldridge  
Olivia Ames-Lewis  
Penny Baxter  
Sue Bevan  
Margaret Dare  
Rachel Edmondson  
Angela Hand  
Elaine Harre  
Sheila Hendy  
Susan Hinton  
Rita Horton  
Nora Kennea  
Judith Lewy

### First Altos

Helen Archibald  
Janet Baumgart  
Iris Bennett  
Jean Brown  
Barbara Buck  
Juliet Butler  
Amanda Clayton  
Mary Clayton  
Janet Critchley  
Fiona Davis  
Sheila Davidson  
Valerie Edwards  
Maggie Guilfoyle  
Ingrid Hardiman  
Lesley Haugh  
Marilynn Hill  
Joy Hunter  
Helen Lavin

### Second Altos

Iris Ball  
Evelyn Beastall  
Alison Bosley  
Sally Donaldson  
Gina Eason  
Claire Edwards  
Pamela Harman  
Carol Hobbs  
Sheila Hodson  
Kathleen Isaac

### First Tenors

Chris Blatchford  
Bob Cowell  
Maggie van Koetsveld  
Peter Lemmon  
Elizabeth Lyon  
Christopher Morris

Margaret Mylchreest  
Susan Norton  
Robin Onslow  
Margaret Parry  
Jean Radley  
Susan Ranft  
Joan Robinson  
Judy Smith  
Marie Sprott  
Claire Stockdale  
Enid Weston  
Caroline Winfield

Evelyn Macmillan  
Chris Maunders  
Jane Norman  
Vivienne Parsons  
Rosalind Plowright  
Gillian Rix  
Maureen Shortland  
Dawn Smith  
Kathy Stickland  
Margaret Strivens  
Susan Taylor  
Morag Walling  
Christine Wilks  
Tessa Wilkinson

Mary McTurk  
Christine Medlow  
Sheila Morris  
Cynthia Pepler  
Susan Pope  
Grace Price  
Catherine Shacklady  
Gillian Sharpe  
Jean Shail  
Corinne Sinclair  
Judy A. Smith  
Jennifer Swift  
Margaret Tingley  
Hilary Trigg  
Pauline Vince  
Carol Wyllyams  
Fiona Yeomans

Pandina Kwong  
Brenda Moore  
Jean Munro  
Anne Philips  
Fay Richardson  
Prue Smith  
Rosemary Smith  
Jean Whitehouse  
Beatrice Wood

Roy Price  
Christopher Robinson  
John Trigg  
David Wilkinson  
Jeni Young

### Second Tenors

Maurice Barton  
David Bennett  
Adrian Buxton  
Geoffrey Forster  
George Fordham

Leslie Harfield  
Nick Lamb  
Andrew Reid  
Peter Sayers

### First Basses

Graham Barwick  
Norman Carpenter  
Walter Chattaway  
Neil Clayton  
Douglas Corr  
Michael Dawe  
Clive Dunkley  
Terence Ellis  
Laurie James  
Michael Longford  
Stewart Lyon

Neil Martin  
Peter Pearce  
Roger Penny  
David Ross  
John Schlotel  
Don Skipper  
Philip Stanford  
Donald Walden  
Andrew Whitehouse  
Ralph Whitehouse  
John Yeomans

### Second Basses

Michael Allen  
Peter Andrews  
Roger Barrett  
Geoff Boyt  
Michael Bradbeer  
John Britten  
Henry Carew  
Arthur Croker  
Rodney Cuff

Terence Field  
Don Hendy  
Peter Herbert  
Michael Jeffery  
Maxwell New  
Barry Norman  
John Parry  
Nigel Pollock  
Bernard Preston

### THE NIGHT MOZART DIED

*A Gala Memorial Concert for Mozart*

THE GUILDFORD PHILHARMONIC

ORCHESTRA

THE GUILDFORD CHAMBER CHOIR

*Conducted by*

SIR CHARLES GROVES

Fiona Firth-Spiller (Soprano)

Pauline Cayzer (Mezzo)

Martyn Harrison (Tenor)

Martin Robson (Bass)

at

HOLY TRINITY CHURCH, GUILDFORD

4th DECEMBER 1991

at 10.00pm

AVE VERUM CORPUS

SYMPHONY No 35 in D 'THE HAFNER'

REQUIEM

*The concert will take place exactly two hundred years on from Mozart's last hours, and will conclude with a performance of the Requiem that will end at the time Mozart died.*

*Join us in this poignant commemoration of a unique genius, who has given music lovers so much joy. It is truly a once-a-lifetime occasion. Tickets are available either for the concert only, or to include a grand reception in the Guildhall at 8pm. The reception will include wine, canapes, and live wind band music.*

*Concert tickets £15.00*

*Concert/Reception £25.00*

**Apply to G.P.O. Office,  
The Lodge, Allen House Grounds,  
Chertsey St., Guildford, GU1 4HL.**

# QUALITY

As Britain's leading supplier of industrial, medical and special gases, we are constantly striving to achieve customer satisfaction through quality.

So, too, are our colleagues at BOC Cryoplants, who design and manufacture cryogenic production equipment.

We never forget, however, that quality awareness is every bit as important locally as it is nationally.

Once again we are pleased to support the Guildford Philharmonic Orchestra in furthering the town's reputation for quality and creativity in the performing arts.

**BOC Limited**

The Priestley Centre  
10 Priestley Road  
The Surrey Research Park  
Guildford  
Surrey  
GU2 5XY

Telephone: Guildford (0483) 579857

Facsimile: (0483) 505211



**BOC**

# WE MAKE PRINTED MUSIC EASY TO GET

*Printed Music Experts* – Large stock of Classical and Educational music.  
– Constantly changing 'browse' stock.  
– Fast, reliable Mail Order service.  
– Helpful, efficient staff.

*Musical Instruments* – We stock all leading makes.  
– Rental scheme with option to purchase.  
– Comprehensive accessories.  
– Repair service.

Access, Visa, American Express, Diners cards accepted.

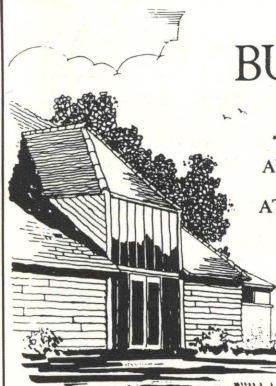
## BRITTEN'S MUSIC

3 Station Approach, West Byfleet, Surrey KT14 6NG. Tel: Byfleet 351165 (24hrs) and 351614

Open Monday–Saturday 9–5.30 (Saturday close 4.30)

Mail Order Dept: 3 Claremont Road, West Byfleet, Surrey KT14 6DY

Tel. Byfleet 354898 (24hrs) Mon–Fri 9–5.30



### BURCHATTS *farm barn*

AWARD WINNING RESTORED  
GEORGIAN BARN  
AT STOKE PARK, GUILDFORD,  
SURREY

THE NEW VENUE FOR:  
FUNCTIONS  
CONFERENCES  
RECEPTIONS

- Seats up to 70 for formal dinner
- Range of conference facilities
- Modern kitchen equipped for commercial catering
- Patio and marquee
- Car parking and access for the disabled
- Competitive hire prices

For full details on Burchatts Farm Barn contact  
Miss J Boothroyde

Guildford Borough Council, Millmead House, Millmead,  
Guildford, Surrey GU2 5BB. Telephone 0483 - 444701.



GUILDFORD  
BOROUGH

Serving Surrey Music Lovers for over 130 years

## T. ANDREWS & CO. LTD.

(Established in Guildford in 1857)

PIANOS  
and  
MUSIC



Agents for leading makers

Pianos for sale, hire and concert use

62 MEADOW, GODALMING

Telephone: Godalming 422459

Smith Associates Limited,  
Europe's leading firm of independent  
consulting system engineers,  
is pleased to support the  
Guildford Philharmonic Orchestra

**Smith**

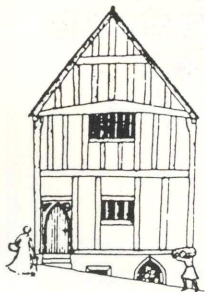


at

— THE UNDERCROFT —

GUILDFORD'S TOURIST  
INFORMATION CENTRE

The Undercroft is a stone vaulted basement dating from the 13th Century and described by English Heritage as "the finest mediaeval building of its kind". It is now the home of the Guildford Tourist Information Centre where a team of friendly, knowledgeable staff offers both the local resident and visitor the following services and information:



- Places to visit
- What's on
- Guided walks of Guildford
- Free accommodation booking service
- Tickets for local events
- Holiday information service
- Travel information
- Souvenirs, guides, books and maps

72 HIGH STREET  
GUILDFORD

(opposite Angel Hotel)

TEL: 0483 444007

(24-hour answering service)

Opening Hours:

1 May - 30 September, Mon-Sat 10.00-19.00

Sunday 10.00-17.00

1 October - 30 April, Mon-Sat 10.00-17.00

**G**  
GUILDFORD  
BOROUGH

GUILDFORD PHILHARMONIC ORCHESTRA

Dates for your Diary  
Concerts in and around the South East

**16 November 1991**, Leisure Centre Worcester  
Worcester Choral Society, Conductor: Donald Hunt  
**4 December 1991**, Holy Trinity Church Guildford  
"The Night Mozart Died", Guildford Chamber Choir  
Conductor: Sir Charles Groves  
**12 January 1992**, Civic Hall Guildford  
Ron Goodwin in Concert  
**1 February 1992**, The Hawth Crawley  
Piano: John Lill, Conductor: Sir Charles Groves  
**23 February 1992**, Leas Cliff Hall Folkestone  
Piano: John Lill, Conductor: Owain Arwel Hughes  
**21 March 1992**, Petersfield Festival  
Petersfield Festival Choir, Conductor: William Llewellyn  
**28 March 1992**, Chichester Cathedral  
The Chichester Singers, Conductor: Jonathan Willcocks  
**11 April 1992**, The Hexagon Reading  
Reading Festival Chorus, Conductor: Jonathan Grieves Smith  
**23/24/25 April 1992**, Leith Hill Festival  
Leith Hill Festival Choir, Conductor: William Llewellyn  
**30 May 1992**, Guildford Cathedral  
Kingston & West Sussex Choral Societies  
Conductor: Robin Page  
**13 June 1992**, Fairfield Halls Croydon  
The Chichester Singers, Belshazzar's Feast (Walton)  
**11 July 1992**, Chichester Cathedral  
The Chichester Singers, Messiah (Handel)  
**15 August 1992**, Kenwood Concert Bowl London  
Flute: William Boustany, Conductor: Sir Charles Groves

Full details from GPO Office, Tel. 0483 444666

Hart  
Brown  
& Co

SOLICITORS

*... proudly supporting  
The Professional  
Orchestra of the South East*

68 Woodbridge Road, Guildford, Surrey GU1 4RE Tel: (0483) 68267

West Bank, 4 Jenner Road, Guildford, Surrey GU1 3PW Tel: (0483) 68267

2 Bank Buildings, High Street, Cranleigh, Surrey GU6 8BE Tel: (0483) 273088

33 High Street, Cobham, Surrey KT11 3ES Tel: (0932) 864433

8 Guildford Road, Woking, Surrey GU22 7PX Tel: (0483) 729991

1 South Street, Godalming, Surrey GU7 1DA Tel: (0483) 426866

Hart Brown House, Victoria Road, Farnham, Surrey GU9 7RG Tel: (0252) 737303

