

GUILDFORD BOROUGH COUNCIL



GPO

GUILDFORD
PHILHARMONIC
ORCHESTRA

THE PROFESSIONAL ORCHESTRA OF THE SOUTH-EAST

1989/90 SEASON

GUILDFORD PHILHARMONIC ORCHESTRA SEASON 1989/90

Saturday 14 October 1989 at 7.30 p.m.

The Crossley Clitheroe Concert
Overture 'Der Freischutz' Weber
Cello Concerto Dvorak
Symphony No 7 Beethoven
Ronald Zollman Conductor
Robert Cohen Cello

Sunday 29 October 1989 at 3 p.m.

Overture 'Egmont' Beethoven
Piano Concerto No 21 (K467) Mozart
Symphony No 40 Mozart
Jean-Bernard Pommier Director/Soloist

Saturday 11 November 1989 at 7.30 p.m.

Civic Concert
For the Fallen from
'The Spirit of England' Elgar
Enigma Variations Elgar
Intimations of Immortality Finzi
Sir Charles Groves Conductor
Ian Partridge Tenor
Philharmonic Choir
Hosted by the Mayor of Guildford
Sponsored by BOC

IN CONVERSATION 6 p.m. in the County Room Sir Charles Groves and Mrs Joy Finzi discuss 'Intimations of Immortality'.

Sunday 26 November 1989 at 3.00 p.m.

Concert for the 100th Anniversary of the RSPB
The Birds Respighi
On Hearing the First Cuckoo in Spring Delius
The Lark Ascending Vaughan Williams
Symphony No 5 Vaughan Williams
Vernon Handley Conductor
Tasmin Little Violin
View Vernon Handley's display of bird photographs after concert in the County Room.

Saturday 9 December 1989 at 7.30 p.m.

Four Last Songs Richard Strauss
Symphony No 7 Bruckner
Volker Wangenheim Conductor
Alison Hargan Soprano

Sunday 10 December 1989 at 3.00 p.m.

Family Christmas Carol Concert
Neville Creed Conductor
Guildford Philharmonic Orchestra
Guildford Philharmonic Choir
Guildford Cathedral Chorists

In association with Guildford Rotary Club

Tickets: £5.00., £3.00. (Concessions OAP/children)

Saturday 6 January 1990 at 7 p.m.

Grand Viennese Evening
with the
Guildford Philharmonic Orchestra
Conducted by **Vilem Tausky**

A concert of popular Viennese music for all the family with a conductor renowned for his interpretations of the favourite waltzes and polkas of the Strauss family.

Sunday 21 January 1990 at 3.00 p.m.

Prelude 'Die Meistersinger' Wagner
The Chagall Windows McCabe
Symphony No 2 Brahms
Sir Charles Groves Conductor
PRE-CONCERT TALK at 2.15 p.m. in the Civic Hall
By Sir Charles Groves and John McCabe.

Saturday 3 February 1990 at 7.30 p.m.

Overture 'Russian & Ludmilla' Glinka
Violin Concerto Sibelius
Symphonie Fantastique Berlioz
Sir Charles Groves Conductor
Barbara Gorzynska Violin
IN CONVERSATION at 6.00 p.m. in the County Room
Sir Charles Groves discusses Berlioz' 'Symphonie Fantastique.'

Saturday 10 March 1990 at 7.30 p.m.

Messiah Handel
Sir David Willcocks Conductor
Tracey Chadwell Soprano
Nigel Short Alto
Andrew Murgatroyd Tenor
Alastair Miles Bass
Philharmonic Choir

Sunday 25 March 1990 at 3.00 p.m.

Sinfonie Concertante Haydn
for Violin, Cello, Oboe & Bassoon
Siegfried Idyll Wagner
Symphony No 5 Sibelius
Martyn Brabbins Conductor
(Leeds International Conducting
Competition Winner 1988)

Saturday 7 April 1990 at 7.30 p.m.

Overture 'Semiramide' Rossini
Piano Concerto No 3 Beethoven
Symphony No 8 Dvorak
Brian Wright Conductor
Ronan O'Hora Piano
IN CONVERSATION at 6.00 p.m. in the County Room
Brian Wright and Ronan O'Hora give an insight
into Beethoven's Piano Concerto No 3.

Saturday 28 April 1990 at 7.30 p.m.

Celebration Concert in the Cathedral
Missa Solemnis Beethoven
Sir Charles Groves Conductor
Anne Dawson Soprano
Penelope Walker Mezzo Soprano
Richard Morton Tenor
Peter Rose Bass
Philharmonic Choir
A musical treat to celebrate Sir Charles Groves' 75th Birthday,
and Guildford's 10 year twinning with Freiburg, Germany.

Sunday 4 March 1990 at 3.00 p.m.

Celebrity Recital
Civic Hall
Kyung-Wha Chung Violin
Phillip Moll (accompanist)
Programme to include:
Sonata No 13 in D major Handel
Sonata No 1 Bartok
Sonata No 1 in G major Brahms
Tickets £8.50, £7.50, £6.50 from Civic Hall.
(£1 off with Virtuoso Cards)

RECORD CORNER

RECORDS-TAPES
COMPACT DISCS

TRADE IN SERVICE
FOR CD COLLECTORS

MAIL ORDER SERVICE

SHEET MUSIC AVAILABLE
SEPTEMBER 1989

ACCESS & VISA WELCOME

TOM BRIGGS

RECORD CORNER LTD.
POUND LANE-GODALMING-SURREY
PHONE: GODALMING 22006
MON-SAT 9.00am - 5.30pm.

Thatchers Resort *Hotel*



MUSIC TO
THE PALATE



A truly gastronomic combination
of excellent food and wine, available
in our Restaurant.

Thatchers Resort Hotel, Epsom Road,
East Horsley, Surrey KT24 6TB
Telephone: East Horsley (04865) 4291



CENTRAL RESERVATIONS FREEPHONE 0800 500 100

HUTSON POOLE SOLICITORS AND COMMISSIONERS FOR OATHS

NOTARY PUBLIC

—————
WE

PROVIDE

A COMPREHENSIVE SERVICE

TO PRIVATE AND
CORPORATE CLIENTS

—————
17/18 QUARRY STREET,
GUILDFORD, GU1 3XA.

Tel: (0483) 65244

UNIVERSITY OF SURREY DEPARTMENT OF MUSIC



Members of the public are most welcome at all our concerts, which take place during term-time in the Performing Arts Technology Studios on campus. Wednesday Lunchtime Recitals start at 1.15 pm and are admission free. Concerts are also held on selected Thursday and Sunday evenings and afternoons.

Please call the Department if you would like to be placed on our mailing list.

Further information is available from: -

The Secretary
Department of Music
University of Surrey
Guildford, GU2 5XH
(Tel: Guildford 509317)

1989-90 Term Dates

Autumn Term: 9 October to 15 December 1989

Spring Term: 8 January to 16 March 1990

Summer Term: 23 April to 29 June 1990

BOC

gases

mean

business...



...locally

BOC is proud to be assisting the Guildford Philharmonic again this year by sponsoring the Civic Concert on November 11th.

See how BOC industrial gases can help your business too.

From its base in Guildford, BOC runs the most comprehensive and efficient gas supply network in the country.

The company supplies industrial, medical and special gases, in cylinders or in liquid form, for a wide variety of applications.

This complete gas service is built on the most modern manufacturing plant and the latest technology in systems and equipment — much of which is designed in Guildford — to ensure that the BOC customers' needs are met in the most cost-efficient manner.



Big enough to cope, local enough to care.

BOC Limited,
The Priestley Centre, 10 Priestley Road,
The Surrey Research Park, Guildford, Surrey GU2 5XY
Telephone: (0483) 579857

**GUILDFORD BOROUGH
COUNCIL CONCERTS 1989/90**

CIVIC HALL, GUILDFORD

**SATURDAY 10 MARCH 1990
at 7.30 p.m.**

**Guildford
Philharmonic
Orchestra**

Associate Leaders:

HUGH BEAN, JOHN LUDLOW

TRACY CHADWELL

Soprano

NIGEL SHORT

Alto

ANDREW MURGATROYD

Tenor

ALASTAIR MILES

Bass

SIR DAVID WILLCOCKS

Conductor

**THIS CONCERT IS PROMOTED BY GUILDFORD
BOROUGH COUNCIL WITH FINANCIAL SUPPORT
FROM THE SOUTH EAST ARTS ASSOCIATION.**

**THE GUILDFORD PHILHARMONIC ORCHESTRA
GRATEFULLY ACKNOWLEDGES THE SUPPORT OF ITS
MAJOR SPONSORS: HART BROWN & Co., Solicitors, and BOC**

**THE GUILDFORD PHILHARMONIC ORCHESTRA &
SOUTH EAST MUSIC TRUST ACKNOWLEDGE THE
GENEROUS SUPPORT OF THE MUSICIANS' UNION**

**The Orchestra is pleased to acknowledge the Corporate
Memberships of:**

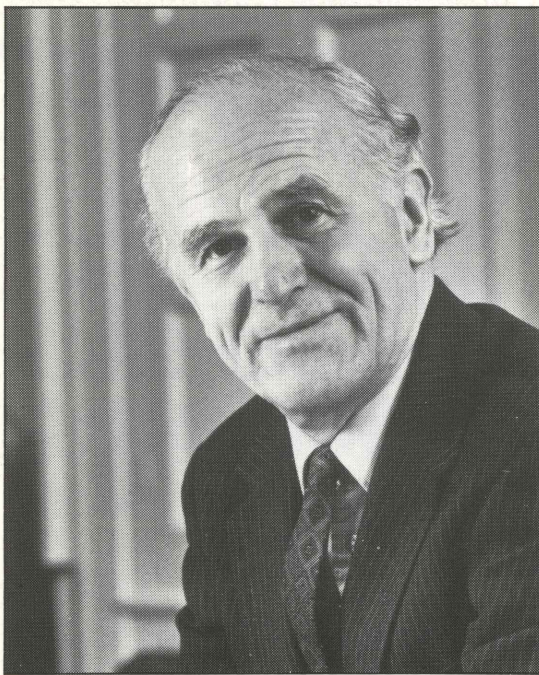
BOC

Hutson Poole & Co

Plastic Coatings Ltd

Sterling-Winthrop Group Ltd

**This concert is featured in Embassy Hotels
Leisure Learning weekends.**



Sir David Willcocks

Sir David Willcocks began his musical training as a chorister at Westminster Abbey, later winning scholarships to Clifton College and King's College Cambridge. After a five-year period of war service he was elected a Fellow of King's College Cambridge, and appointed Conductor of the Cambridge Philharmonic Society. Subsequently he became Organist of Salisbury Cathedral, and later of Worcester Cathedral, conducting at the Three Choirs Festival from 1950 to 1957. From 1957 to 1974 he was Director of Music of King's College Cambridge, University Lecturer in Music, and Conductor of the Cambridge University Musical Society. He was Director of the Royal College of Music from 1974 to 1984 and has been Musical Director of The Bach Choir since 1960.

Under his direction, The Bach Choir and King's College Choir have made many recordings with leading orchestras of great choral and orchestral works. He was knighted in 1977 Silver Jubilee Honours List, and holds honorary degrees in the USA and Canada as well as at the Universities of Bradford, Bristol, Exeter, Leicester and Sussex.

In addition to a busy schedule of concerts in Britain and the USA, last summer he returned to New Zealand and Australia for a series of concerts with the New Zealand Symphony and ABC Orchestras.

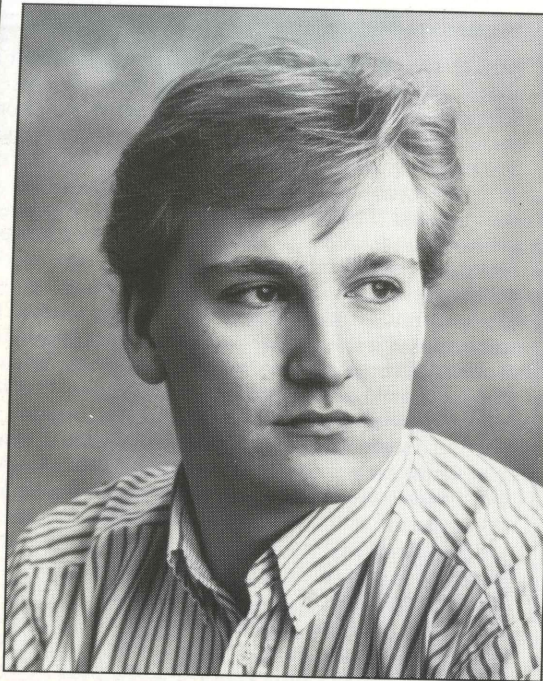


Tracey Chadwell – Soprano

Tracey Chadwell, winner of the 1986 English Song Award and the Soprano Prize of the 1986 Great Grimsby International Singing Competition, studied singing with Dorothy Richardson at the Guildhall School of Music and Drama, Rae Woodland, Silvia Beamish and Rupert Bruce-Lockhart. Tracey spent three years with the BBC Singers after graduating from the Guildhall with honours in 1981, gaining the highest mark of her year for her Final Recital and being awarded the Lord Mayor's Prize. While with the Singers, Tracey frequently undertook solo work for radio recordings, and has since that time recorded regularly for the BBC. She performed for Live Music Now with Dorothy Linell and was awarded the Holst Prize at the 1984 English Song Award.

Since winning the South East Arts Young Musician Platform Scheme and making her Wigmore Hall debut in 1984, Tracey has sung at the South Bank, the Barbican and the Royal Albert Hall, and has appeared at the Edinburgh, Brighton, Greenwich, Windsor and Aldeburgh Festivals as well as at the Proms. With funds from South East Arts, Tracey commissioned a new song cycle from Elizabeth Maconchy which was performed in the 1986 Park Lane Group Series. Tracey has given numerous oratorio performances throughout the country and tours in Europe with the Deller Consort. She has also appeared with the City of Birmingham Symphony Orchestra, the BBC Welsh Symphony and the Ulster Orchestra.

Tracey Chadwell's engagements during 1989 included recitals in Penang and Singapore, and concerts with the Northern Sinfonia. This Spring she sings the role of Madam Butterfly for the first time in Opera East's production on tour all over Eastern England.



Nigel Short – Counter tenor

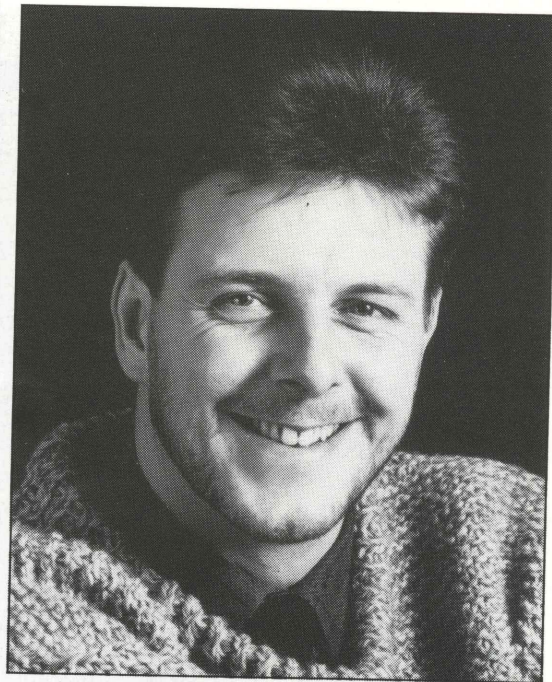
Nigel Short made his professional debut with the Turin Opera Company, Italy in Handel's 'Rinaldo' sharing the role of Godfrede with James Bowman. This was followed by the role of Micah in a staged version of Handel's 'Samson' at the Bach/Handel Festival in Würzburg, Germany 1985. Most recently in Opera he sang the roles of Speranza and Pastore III in a production of Manteverdi's 'Orfeo' in Valencia, Spain.

Other solo engagements abroad have included Eslava's 'Misereri' in the Cathedrals of Seville and Cadiz, Spain, and Pellegrin's 'Te Deum des Fanfares' in the Festival of Aix-en-Provence. He was the alto soloist in the world premiere of Jacques Loussier's 'Messe des Lumieres' in Paray le Manial, France; other performances were given in Albi and Paris.

In recital he has appeared with the Song Makers Almanac at the Festivals of Bath and Aldeburgh and also at the Wigmore Hall, London.

In oratorio he has worked extensively throughout the UK including concerts with such notable orchestras as the Academy of Ancient Music and the English Chamber Orchestra.

Most recently he sang the alto solos in the 'Messiah from Scratch' at the Royal Albert Hall with the conductor Sir David Willcocks. Future work includes his second appearance in the Music of Oxford Series, again singing the Messiah, for conductor Richard Hickox, and performances of Handel's 'Samson' at Frankfurt Alte Oper and Heidelberg, Germany.



Andrew Murgatroyd – Tenor

Andrew Murgatroyd was born in Halifax, West Yorkshire, and after reading music at Lancaster University spent two years as a Lay-Clerk at Christ Church Cathedral, Oxford. His solo concert career takes him to choral societies and festivals throughout Great Britain and Europe including the festivals of Spitalfields, Camden, Bath, Three Spires, Utrecht, Bruges, Aix-en-Provence, and Britain Salutes New York. Engagements have also included Handel's 'Israel in Egypt' for John Eliot Gardiner in Stuttgart, Milan, Paris, Rome, East Berlin and Turin, a Handel concert with Nicholas Kraemer for the Gulbenkian Foundation in Lisbon, Handel's 'Esther' for WDR in Koln, and 'Acis and Galatea' for Swiss Television. Last season he sang Beethoven's 'Missa Solemnis' and 'Ninth Symphony' with The Hanover Band (both recorded for Nimbus), Bach's 'St John Passion' with King's College, Cambridge in London and Cambridge, and Monteverdi's 'Vespers' in a new reconstruction by Graham Dixon with The Sixteen Choir and Orchestra, the recording of which has recently been released on the Hyperion label. Andrew's current appearances include Bach's 'St John Passion' with The Sixteen in Spain, Britten's 'War Requiem' in Belfast, three performances of Mozart's 'Requiem' with The Hanover Band and appearances during the summer at the Bruges and Three Choirs Festivals.



Alastair Miles – Bass

Alastair Miles scored a success with the Guildford Philharmonic Orchestra and Choir in a performance of Mozart's 'Requiem' under Wilfred Boettcher in 1988.

He trained first as a flautist at the Guildhall School of Music and pursued a freelance orchestral career, before making his operatic debut in 1985 with Opera 80 as Truelove (The Rake's Progress). Subsequently, he studied at the National Opera Studio, firmly establishing his new identity as a singer by winning the 1986 Decca-Kathleen Ferrier Prize, the Esso Glyndebourne Touring Opera Award and the 1987 John Christie Award.

Since then, his operatic roles have included: Pietro in 'Simon Boccanegra'; Diener in 'Capriccio'; Dikoy in 'Katya Kabanova'; Colline in 'La Boheme'; Ferrando in 'Il Trovatore'; the Poacher in 'Cunning Little Vixen'; the Spirit Messenger in 'Die Frau ohne Schatten' and Raimondo in 'Lucia di Lammermoor'.

In addition to his flourishing operatic career, Alastair is in increasing demand as a soloist in concerts and oratorio. He has sung with many choral societies and orchestras throughout Great Britain, including the Bournemouth Symphony Orchestra, the London Mozart Players and the English Baroque Soloists under John Eliot Gardiner, for whom he has performed and recorded the title role in Handel's 'Saul', the Monteverdi 'Vespers', the Beethoven 'Mass in C' and the 'Missa Solemnis'.

In December 1989, Alastair made his debut in the United States in performances of Beethoven's Ninth 'Choral' Symphony with the New York Philharmonic Orchestra under Zubin Mehta.

Neville Creed – Conductor

Neville Creed began his conducting career whilst a choral scholar at Cambridge. He then became a Director of Choral Music at Tiffin School in Kingston-upon-Thames, providing choirs for several highly acclaimed recordings on radio, tv and disc. The Tiffin Boys' Choir recording of Mahler's 8th Symphony with the London Philharmonic under Klaus Tennstedt gained a nomination for a "Grammy" award. During this time, Neville Creed was also conductor of the Milton Keynes Chorale and became Assistant Chorus Master of the London Philharmonic Choir. In 1986 he was awarded a scholarship to study conducting at the Guildhall School of Music where he won the Ricordi Conducting Prize. Whilst a student he conducted the second British staging of the opera 'Julietta' by Martinu and various orchestral concerts. Since completing his studies at the Guildhall he has founded the "London Music Chamber Choir", gained the posts of Conductor of the Bournemouth Symphony Chorus and the Guildford Philharmonic Choir, as well as being invited to return to the Guildhall as a conductor. Last year he conducted in Denmark and Italy, as well as conducting the Royal Philharmonic "Pops" Orchestra on two occasions. In September 1988 he won the second prize in the First International Choral Conducting Competition held in Italy.

Guildford Philharmonic Choir

Guildford Philharmonic Choir (formerly the Festival Choir) was formed in order to perform the major choral repertoire with the Guildford Philharmonic Orchestra. The choir made its first recording in 1973 of Finzi's 'Intimations of Immortality' with the Guildford Philharmonic and in 1979 recorded Hadley's 'The Trees So High' with the Philharmonia Orchestra, both recordings being conducted by Vernon Handley.

Neville Creed was appointed Chorus Master to the Philharmonic Choir in September 1987, when Lynette Newman, the Choir's accompanist, was also appointed.

The Guildford Philharmonic Choir will be appearing in Guildford Cathedral with the Freiburger Bachchor on Saturday 28 April 1990 for a performance of Beethoven's 'Missa Solemnis' conducted by Sir Charles Groves. This concert will be performed in celebration of Sir Charles Groves' 75th birthday.

MESSIAH

Handel 1685–1759

When Handel set himself in the autumn of 1741, at the age of fifty-six, to compose 'Messiah' he was under a cloud of misfortune and bitter disappointment which must have overwhelmed any but the stoutest spirit. He was in anything but good health; his eyesight was beginning to fail him and he was almost penniless. He shut himself in his house (he was living in Brook Street) and, seeing no one, hardly stopping even to touch the food which his faithful man brought to his room, he worked on the composition of 'Messiah' with such enthusiasm that the oratorio was completed in little more than three weeks. But he had no prospect of an immediate performance, and it was therefore laid aside for the time being.

In November of the same year, the Lord Lieutenant of Ireland, the Duke of Devonshire, and the presidents of three big charitable societies invited him to Dublin to organise concerts of his own music on behalf of the charities they had at heart. One was the provision of food for prisoners. It was at one of these concerts that 'Messiah' had its first performance in April, 1742. The singers also went over from this country, Mrs Cibber, the actress, being the contralto. The oratorio had a magnificent success, and it was repeated in the following June.

When the work was first given in London in the early part of 1743, at Covent Garden Theatre, it was practically a failure. Only when it was performed in the Foundling Hospital, in 1750, did it win its way to the hearts of Londoners, and since then it is safe to say it has been the most popular of all oratorios in every part of the country.

Handel evidently thought highly of the Foundling Hospital, for during his lifetime he made for this charity more than £7,000. In the codicil of his will he said, "I give a fair Copy of the Score and all the Parts of my Oratorio called the Messiah to the Foundling Hospital".

Many years ago that refreshingly outspoken critic, John F. Runciman, the baiter and bugbear of all sombre and egotistical academicians, pointed out that 'Messiah' had become a Christmas institution, like roast turkey, plum-puddings, mince pies and "other indigestible foods". He suggested that Handel would rather have seen his oratorio forgotten than regarded as "merely an aid to evangelical religion or an after-dinner digestive on Christmas day".

Handel's 'Messiah' is a great musical entertainment and experience and not a very gloomy and dull musical rite, as it used to be treated. It is full of great music that interprets the dramatic text with astonishing fidelity. Handel was the supreme master in using simple means to secure mighty effects, and nowhere does he show the stature of his genius in this direction more than in 'Messiah'.

PART ONE

OVERTURE

- RECIT. (Tenor) Comfort ye
AIR (Tenor) Every valley shall be exalted
CHORUS And the glory of the Lord
RECIT. (Bass) Thus said the Lord of Hosts
AIR (Alto) But who may abide
CHORUS And he shall purify
RECIT. (Alto) Behold, a virgin shall conceive
AIR (Alto and Chorus) O thou that tellest
RECIT. (Bass) For, behold, darkness shall cover
AIR (Bass) The people that walked in darkness
CHORUS For unto us a child is born
PASTORAL SYMPHONY
RECIT. (Soprano) .. There were shepherds
RECIT. (Soprano) .. And lo! the angel of the Lord
RECIT. (Soprano) .. And the angel said unto them
RECIT. (Soprano) .. And suddenly there was
CHORUS Glory to God
AIR (Soprano) Rejoice greatly
RECIT. (Alto) Then shall the eyes of the blind
AIR (Alto and Soprano) He shall feed his flock
Come unto Him
CHORUS His yoke is easy

PART TWO

- CHORUS Behold the Lamb of God
AIR (Alto) He was despised
CHORUS Surely he hath borne our griefs
CHORUS And with his stripes
CHORUS All we like sheep
RECIT. (Tenor) All they that see Him
CHORUS He trusted in God
RECIT. (Tenor) Thy rebuke hath broken his heart
AIR (Tenor) Behold, and see if there be any
sorrow
RECIT. (Tenor) He was cut off
AIR (Tenor) But Thou didst not leave
CHORUS Lift up your heads

Interval

- CHORUS The Lord gave the word
AIR (Soprano) How beautiful are the feet
CHORUS Their sound is gone out into all
lands
AIR (Bass) Why do the nations
CHORUS Let us break their bonds asunder
RECIT. (Tenor) He that dwelleth in heaven
AIR (Tenor) Thou shalt break them with a
rod of iron
CHORUS Hallelujah

PART THREE

- AIR (Soprano) I know that my redeemer liveth
CHORUS Since by man came death
RECIT. (Bass) Behold I tell you a mystery
AIR (Bass) The trumpet shall sound
CHORUS Worthy is the Lamb

GUILDFORD PHILHARMONIC CHOIR

Soprano 1

Louise Barnfield
Marion Blackburn
Jilly Bradshaw
Steffi Brenner
Mary Broughton
Kathryn Busby
Claire Butcher
Elaine Chapman
Louise Compton
Rachel Crookenden
Jill Davies
Maura Dearden
Celia Embleton
Josephine Field
Rita Frith
Jenny Hakim
Sheila Hendy
Elaine Inglis
Ruth Joad
Kate Ker
Sue Maddox
Elizabeth McCracken
Alison Munro
Rosemary Munro
Susan Norton
Lady Onslow
Margaret Parry
Jean Radley
Judy Smith
Marie Sprott
Enid Weston
Barbara Williams
Caroline Winfield

Soprano 2

Kathleen Aldridge
Caroline Bennett
Mary Brown
Isobel Charsley
Margaret Dare
Fiona David
Andrea Dombrowe
Barbara Doyle
Valerie Edwards
Mary Fox
Elaine Harre
Susan Hinton
Rita Horton
Nora Kennea
Judith Lewy
Sue McCloughry
Evelyn Macmillan
Christine Nicholson
Alexandra Palmer
Vicky Payne
Rosalind Plowright
Gillian Rix
Jean Shail
Maureen Shortland
Corinne Sinclair
Kathy Stickland
Margaret Strivens
Christine Wilks

Alto 1

Marion Andrews
Helen Archibald
Iris Bennett
Jean Brown
Amanda Clayton
Janet Critchley
Sheila Davidson
Ruth Durbridge
Diana Forder
Maggie Guilfoyle
Ingrid Hardiman
Karen Hart
Lesley Haugh
Marilynn Hill
Joy Hunter
Claire Ingram
Anne Joyce
Helen Lavin
Mary Laws
Christine Medlow
Noel Monier-Williams
Brenda Moore
Sheila Morris
Penny Muray
Cynthia Pepler
Grace Price
Grace Rose
Catherine Shacklady
Gillian Sharpe
Judy A. Smith
Margaret Tingley
Hilary Trigg
Alison Tumber
Pauline Vince
Carol Wyllyams
Fiona Yeomans

Alto 2

Iris Ball
Evelyn Beastal
Alison Bosley
Val Cowan
Jane Davison
Sally Donaldson
Gina Eason
Beth Gilham
Diana Hammans
Pamela Harman
Carol Hobbs
Sheila Hodson
Kathleen Isaac
Pandina Kwong
Hilary Marsden
Jean Munro
Anne Philps
Fay Richardson
Carol Rowe
Prue Smith
Rosemary Smith
Jean Whitehouse
Margaret Wilson
Beatrice Wood

Tenor 1

Brian Avery
Chris Blatchford
Robert Bromham
Bob Cowell
Maggie van Koetsveld
Peter Lemmon
Elizabeth Lyon
Christopher Morris
Roy Price
Christopher Robinson
Andrew Reid
Andrew Ross
David Wilkinson
Jeni Young

Tenor 2

Chris Anderson
David Bennett
Adrian Buxton
Toby Crowe
George Fordham
Geoffrey Forster
Leslie Harfield
Alfred Knowles
Nick Lamb
John Palmer
Peter Wilford

Bass 1

Graham Barwick
David Bowman
Norman Carpenter
Walter Chattaway
Neil Clayton
Douglas Corr
Paul Crossfield
Michael Dawe
Laurie James
Michael Longford
Neil Martin
Martin Monier-Williams
Peter Pearce
Roger Penny
David Ross
John Schlotel
Don Skipper
Philip Stanford
Donald Walden
Andrew Whitehouse
Ralph Whitehouse
John Yeomans

Bass 2

Michael Allen
Peter Andrews
Roger Barrett
Geoff Boyt
Michael Bradbeer
Peter Brackfield
John Britten
Henry Carew
Andrew Croker
Terence Field
Peter Herbert
Michael Jeffery
Roy Miles
Maxwell New
Barry Norman
John Parry
Nigel Pollock

GUILDFORD PHILHARMONIC ORCHESTRA**Principal Conductor: SIR CHARLES GROVES****First Violins:**

Hugh Bean
 John Ludlow
 Christopher Bearman
 Hywel Davies
 Patricia Lovell
 Linda McLaren
 Alex Suttie
 Donald Weekes

General Manager:

Kathleen Atkins

Music Administrator:

Peter Holt

Concerts Assistant:

Linda Mowat

Second Violins:

Nicholas Maxted Jones
 Rosemary Roberts
 Timothy Callaghan
 Ruth Dawson
 Ruth Knell
 Adrienne Sturdy

Violas:

John Meek
 John Jezard
 Frederick Campbell
 Stephanie Williams

Cellos:

Norman Jones
 Michael Ronayne
 John Kirby
 Rhian Isaacson

Basses:

Neil Tarlton
 Peter Box

Oboes:

Helen McQueen
 Ann Greene

Bassoon:

Anna Meadows

Trumpets:

John Hardy
 Patricia Reid

Timpani:

Roger Blair

Harpichord:

John Forster

The audience may be interested to know that the violin sections are listed in alphabetical order after the first desk because a system of rotation of desks is adopted in this orchestra so that all players have the opportunity of playing in all positions in the section.

GUILDFORD PHILHARMONIC ORCHESTRA
 THE LODGE
 ALLEN HOUSE GROUNDS
 CHERTSEY STREET, GUILDFORD
 GU1 4HL. Tel: (0483) 444666

SUNDAY 18 MARCH 1990 at 7.30 pm

CAMBERLEY CIVIC HALL

presents

CLASSICS FOR PLEASURE

featuring the

GUILDFORD PHILHARMONIC**STRING ENSEMBLE****Director: Hugh Bean****Programme:****Mozart** Divertimento in D**Bach:** Concerto for two violins and strings**Soloists: Hugh Bean & John Ludlow****Grieg:** Holberg Suite**Prelude, Sarabande, Gavotte, Air, Rigaudon****Holst:** St. Pauls Suite**Jig, Ostinato, Intermezzo, Finale****Sponsored by Johnson Wax****Tickets: £7.50 & £6.50 (Party Rates available)****Box Office Tel: (0276) 23738****TUESDAY 20 MARCH 1990 at 7.30 pm**

Petersfield Festival Hall

GUILDFORD PHILHARMONIC ORCHESTRA**3 Songs of Praise****Dyson****Oboe Concerto****Vaughan Williams****King Arthur****Purcell****Geoffrey Bridge (oboe)****William Llewellyn (conductor)****SATURDAY 24 MARCH 1990 at 7.30 pm**

Petersfield Festival Hall

Requiem**Faure****This Day to Man****Hurd****Shore Leave****Hurd****Pavane****Ravel****William Llewellyn (conductor)****Ticket Prices: £6.00 & £4.00****Available until 18 March at (0730) 62825****Available at Festival Box Office from 19-24 March
(0730) 63325****SUNDAY 25 MARCH 1990 at 3.00 pm**

Civic Hall, Guildford

SINFONIE CONCERTANTE**Haydn****for Violin, Cello, Oboe and Bassoon****SIEGFRIED IDYLL****Wagner****SYMPHONY No 5****Sibelius****MARTYN BRABBINS****Conductor****(Leeds International Conducting****Competition Winner 1988)****Tickets: £7.50, £6.50, £5.50, available from****Civic Hall Box Office Tel: (0483) 444555**

SUBSCRIBERS ARE SPECIAL

WHY NOT BECOME ONE?

INFORMATION FROM

**THE GUILDFORD PHILHARMONIC
ORCHESTRA'S OFFICE**

TELEPHONE: (0483) 444666

Guildford Philharmonic Society

(Charity Registration 288295)

The Guildford Philharmonic Society is the 'Supporters Club' of the Guildford Philharmonic Orchestra and was originally founded with the prime object of encouraging not only its members but also the general public in the awareness of and to attend the season of concerts in the Civic Hall by the Guildford Philharmonic Orchestra. It still has this main object but also the Society assists with the provision of the finances for considerable extra publicity for the concert season. The Society is a registered charity and welcomes the payment of subscriptions by a Deed of Covenant, as payment by this method also ensures that the subscription is not raised for four years. Members receive certain benefits and these include:

- Priority booking at the beginning of each concert season.
- Members' Evenings
- The Society's Newsletter
- Special events such as visits to other concert venues, musical evenings in members' homes and certain social gatherings during the season
- The opportunity to attend rehearsals of the Orchestra by applying to the Orchestra's Office
- Certain discount facilities at Record Corner, Godalming, on records and cassettes

New Members to the Society are always welcome and by being a member you are also helping to ensure the continued success of the Guildford Philharmonic Orchestra.

The membership rates are as follows:

Annual Subscription (minimum)	£6.00	Persons under the age of 18 (minimum)	£4.00
Husband/Wife-Joint Subscription (minimum)	£10.00	Retirement Pensioner (minimum)	£4.00

If you would like to join the Society, Covenant forms are obtainable from the General Administrators below or you may send a cheque for your subscription together with your name and address to:

Iris & Peter Bennett, Applegarth, The Drive, Cranleigh GU6 7LY Tel: Cranleigh 276131

Alternatively you may enrol at the Society's stand in the foyer of the Civic Hall on concert days.

SUPPORT YOUR ORCHESTRA!! IT NEEDS YOU!!

FIRST CLASS SERVICE FOR CLASSICS FROM A FIRST CLASS MUSIC SHOP

PRINTED MUSIC EXPERTS

Large modern shop with printed music wall to wall. 2,000 of the most requested items always in stock. Constantly changing "browse" stock. Our mail order service is quick, helpful and thorough. Non-stock items typically 10 - 14 days.

MUSICAL INSTRUMENTS

We stock all leading makes. Rental scheme with option to purchase. Extensive experience of school requirements. Sensible advice for parents if needed. Comprehensive accessories. Repairs. Records/Cassettes/Compact Discs. Yamaha Keyboards stocked and demonstrated.

Access, Visa, American Express, Diners Cards.
Large cheap car parks, free on Saturdays.

BRITTEN'S MUSIC Ltd

**3 Station Approach, West Byfleet, Surrey KT14 6NG. Tel: Byfleet 51165 (24hrs) and 51614
Open Monday-Saturday 9-5.30 (Saturday close 4.30)**

**Mail Order Dept: 3 Claremont Road, West Byfleet, Surrey KT14 6DY
Tel. Byfleet 54898 (24 hrs) Mon-Fri 9-5.30**

4

A4

4 COLOUR

6552 CRADDOCKS

GODALMING

sing with

Guildford Philharmonic Choir

SEASON 1989/90

Vivaldi : GLORIA

Vaughan Williams : FIVE MYSTICAL SONGS

Elgar : FOR THE FALLEN

Finzi : INTIMATIONS OF IMMORTALITY

Handel : MESSIAH

Beethoven : MISSA SOLEMNIS

Patterson : MASS OF THE SEA

Stanford : SONGS OF THE SEA

* CHRISTMAS CAROL CONCERT *

All concerts with the Guildford Philharmonic Orchestra

CONDUCTORS:

Sir Charles Groves

Sir David Willcocks

CHORUS MASTER:

Neville Creed

Details from:

Mrs K Atkins, Guildford Philharmonic Choir Office,

The Lodge, Allen House Grounds

Chertsey Street, Guildford

Surrey GU1 4HL

Tel: 0483 444666

With financial support from

Guildford Borough Council



Leisure for Pleasure from Guildford Borough Council

<p>GPO GUILDFORD PHILHARMONIC ORCHESTRA</p>	<p>The top professional orchestra of the South East performing a full range of concerts and recitals at the Civic Hall. Tel: G. 444666</p>	<p>Guildford Museum Castle Arch, Quarry Street</p>	<p>Items relating to Surrey dating from prehistory to the present day. New archaeology gallery. Open Mon-Sat 11am - 5pm. Admission free. Tel: G. 444750</p>
<p>Guildford House 155 High Street</p>	<p>Varied art exhibitions throughout the year Open 10.30am to 4.50pm Mon-Fri; 10.30am-4.15pm Saturdays. Admission free. Tel: G. 444741</p>	<p>Parks & Open Spaces</p>	<p>Parks, gardens and open spaces throughout the borough for all tastes and interests. Tel: G.444701 for full details and to book outdoor sports facilities.</p>
<p>Civic Hall Surreys Premier Entertainment Centre Guildford * LIVE ENTERTAINMENT * CONFERENCES * * BANQUETS * EXHIBITIONS * For Bookings or to Join our Free Mailing List Tel: (0483) 444555.</p>		<p>The Lido Stoke Park Guildford</p>	<p>Open air heated swimming pools set in rolling lawns and beautiful gardens. Open May to September 10.30am - 7pm. Tel: G. 444888</p>
<p>Sports Centre Bedford Road</p>	<p>For sauna, solarium, squash, swimming, keep fit and much more! Tel: G 444777</p>	<p>Ash Manor Sports Centre</p>	<p>At Manor Road Ash. For all types of dry sports. Tel: Aldershot 25484 for full details.</p>



For full details of these and other places and events, contact:
Tourist Information Centre, Civic Hall, Guildford. Tel: G. 444007
(Open 9.30am - 5pm Mon - Fri; 9.30 - 4.30pm Sat.)





"Do you know our soul is composed of harmony"

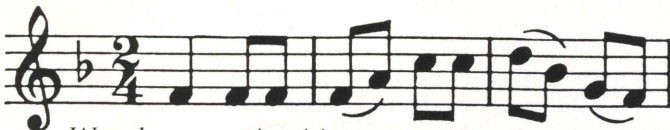
Leonardo Da Vinci (1452-1519)

At Knowle Park Nursing Home we know about the harmony of dignity and lifestyle for all our guests both long and short stay.

This beautifully refurbished historic house set in eleven acres of parkland now has an additional single storey wing with twelve private rooms and suites.

The wing has been designed to take advantage of some of the finest views in the south of England. There are superb communal sitting areas for quiet conviviality or complete relaxation in the tranquil surroundings.

Comprehensive clinical facilities are provided with 24 hour SRN supervision by our friendly and attentive staff.



We welcome your inquiries:

**The Director of Nursing, Knowle Park Nursing Home,
Knowle Lane, Cranleigh GU6 8JL.**

Telephone: Guildford (0483) 275432.

COMFORT · CARE · COURTESY



Hart Brown & Co

SOLICITORS · COMMISSIONERS FOR OATHS

*... proudly supporting
The Orchestra
of the South East*

4 Jenner Road, Guildford (0483) 68267

2 Bank Buildings, Cranleigh (0483) 273088

1 South Street, Godalming (0483) 426866

30 High Street, Cobham (0932) 64433

8 Guildford Road, Woking (04862) 29991

**Hart Brown House, Victoria Road, Farnham (0252) 737303
and Law Courts Branch, 68 Woodbridge Road, Guildford (0483) 68267**

